

# VOR/DME RWY 2

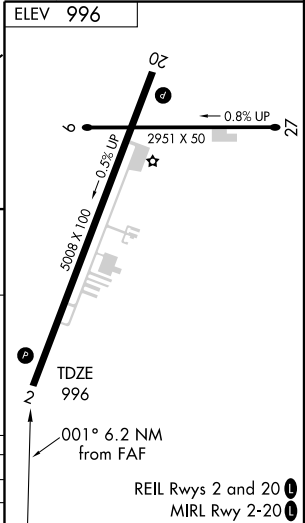
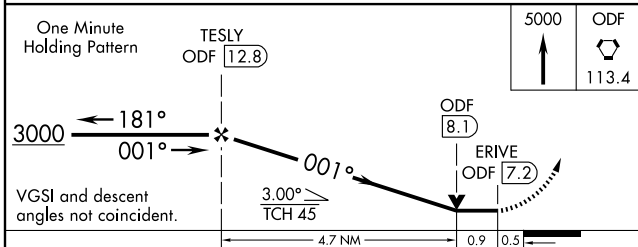
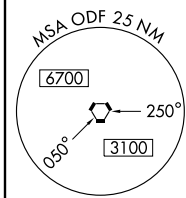
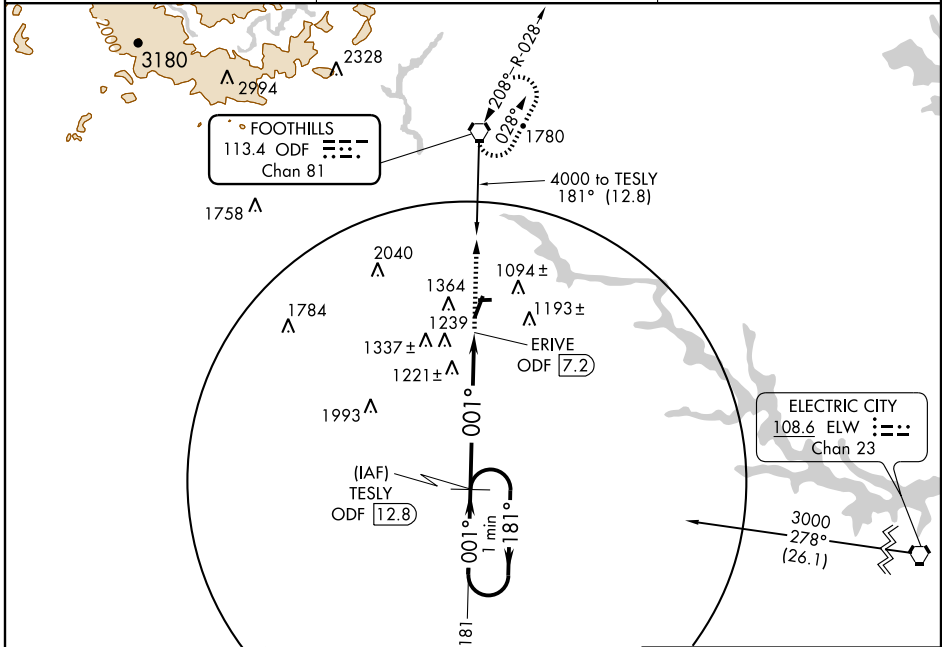
TOCCOA RG LETOURNEAU FIELD (TOC)

VORTAC ODF <b>113.4</b> Chan <b>81</b>	APP CRS <b>001°</b>	Rwy Idg TDZE Apt Elev	<b>5008</b> <b>996</b> <b>996</b>
--	------------------------	-----------------------------	---

**NA** Visibility reduction by helicopters NA. When local altimeter setting not received, use Gainesville altimeter setting and increase all MDA 120 feet and Circling Cat. B visibility 1/4 mile.

**MISSED APPROACH:** Climb to 5000 direct ODF VORTAC and hold, continue climb-in-hold to 5000.

AWOS-3 <b>119.625</b>	ATLANTA CENTER <b>134.8 307.9</b>	UNICOM <b>122.8</b> (CTAF) <b>1</b>
--------------------------	--------------------------------------	--



CATEGORY	A	B	C	D
S-2	1500-1	504 (600-1)		NA
CIRCLING	1720-1	724 (800-1)		NA