

VOR RWY 20

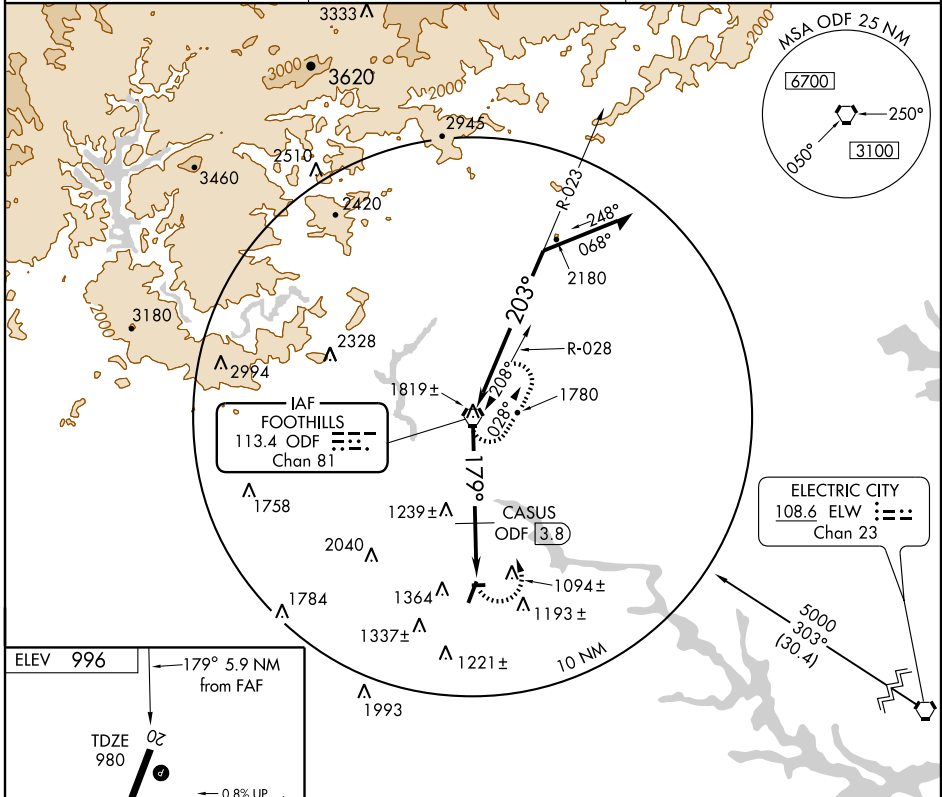
TOCCOA RG LETOURNEAU FIELD (TOC)

VORTAC ODF 113.4 Chan 81	APP CRS 179°	Rwy Idg TDZE Apt Elev	5008 980 996
---------------------------------------	------------------------	-----------------------------	---

▲ When local altimeter setting not received, use Gainesville altimeter setting and increase all MDA 120 feet and S-20, Circling, and Casus fix minimums Circling Cat. B visibilities 1/4 mile.

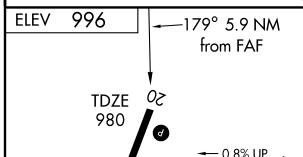
▲ NA MISSED APPROACH: Climbing left turn to 5000 direct ODF VORTAC and hold, continue climb-in-hold to 5000.

AWOS-3 119.625	ATLANTA CENTER 134.8 307.9	UNICOM 122.8 (CTAF)
--------------------------	--------------------------------------	-------------------------------



SE-4, 22 OCT 2009 to 19 NOV 2009

SE-4, 22 OCT 2009 to 19 NOV 2009



	5000	ODF 113.4	VGSIs and descent angles not coincident.		Remain within 10 NM
		CASUS ODF 3.8			
	179°	ODF 4.4	1720*	179°	3200
	203°	ODF 5.9	3.50° TCH 45	203°	5000
	1.5 NM	0.6	3.8 NM		
*1840 when using Gainesville altimeter setting.					
CATEGORY	A	B	C	D	
S-20	1720-1	740 (800-1)		NA	
CIRCLING	1720-1	724 (800-1)		NA	
CASUS FIX MINIMUMS					
S-20	1560-1	580 (600-1)		NA	
CIRCLING	1720-1	724 (800-1)		NA	

ELEV 996	179° 5.9 NM from FAF
TDZE 980	0.8% UP
2951 X 50	0.5% UP
5008 X 100	
REIL Rwy 2 and 20	
MIRL Rwy 2-20	
FAF to MAP 5.9 NM	
Knots	60 90 120 150 180
Min:Sec	5:54 3:56 2:57 2:22 1:58