

CRESTVIEW, FLORIDA

AL-5261 (FAA)

RNAV (GPS) RWY 35

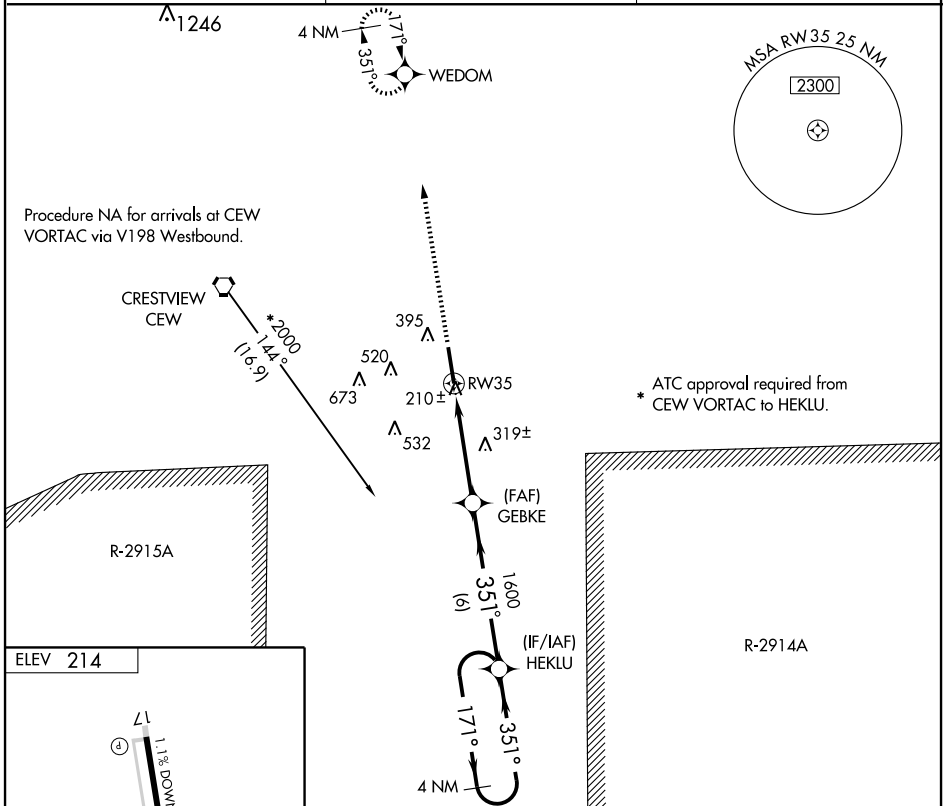
CRESTVIEW/BOB SIKES (CEW)

WAAS CH 40208 W35A	APP CRS 351°	Rwy Idg 8005 TDZE 163 Apt Elev 214
--	------------------------	---

⚠ When local altimeter setting not received, use Eglin AFB altimeter setting and increase all DA/MDAs 60 feet, LPV all Cats and LNAV Cat D visibility ¼ mile. Baro-VNAV NA when using Eglin AFB altimeter setting. For uncompensated Baro-VNAV systems, LNAV/VNAV NA below -15°C (5°F) or above 48°C (118°F). DME/DME RNP-0.3 NA. Visibility reduction by helicopters NA.

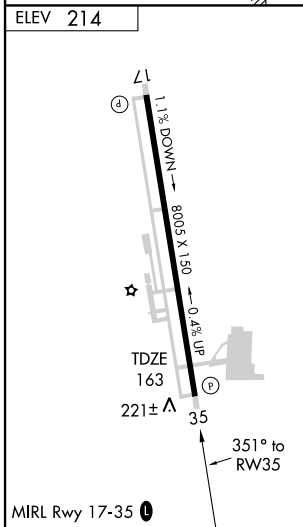
MISSED APPROACH:
Climb to 2000 direct WEDOM and hold.

ASOS 119.275	EGLIN APP CON * 124.05 284.65	UNICOM 122.95 (CTAF) 0
------------------------	---	---



SE-3, 22 OCT 2009 to 19 NOV 2009

SE-3, 22 OCT 2009 to 19 NOV 2009



2000	WEDOM	VGS1 and RNAV glidepath not coincident.		4 NM Holding Pattern
		HEKLU		
		GEBKE		
		RW35		
CATEGORY	A	B	C	D
LPV DA	450-1 287 (300-1)			
LNAV/VNAV DA	491-1½ 328 (300-1½)			
LNAV MDA	580-1	417 (400-1)	580-1¼	417 (400-1¼)
CIRCLING	700-1	486 (500-1)	700-1½	820-2
			486 (500-1½)	606 (700-2)

CRESTVIEW, FLORIDA
Amdt 1 08213

30°47'N-86°31'W

RNAV (GPS) RWY 35