

FREMONT, MICHIGAN

AL-5260 (FAA)

VORTAC MKG <b>115.2</b> Chan <b>99</b>	APP CRS <b>008°</b>	Rwy Idg <b>6498</b> TDZE <b>760</b> Apt Elev <b>772</b>
--	------------------------	---

# VOR RWY 36

FREMONT MUNI (F'FX)



Obtain local altimeter setting on CTAF; when not received, use Muskegon altimeter setting. VDP NA when using Muskegon altimeter setting. DME or RADAR required.

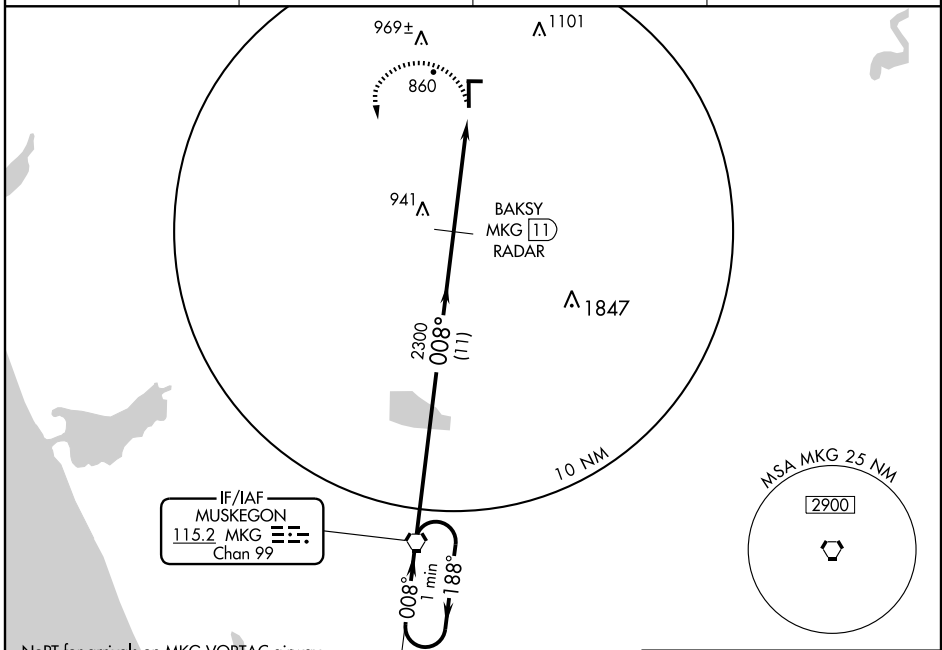
MISSED APPROACH: Climbing left turn to 2400 via MKG R-355 to MKG VORTAC and hold.

AWOS-3  
**118.775**

MUSKEGON APP CON\*  
**119.8 339.1**

CLNC DEL  
**118.25**

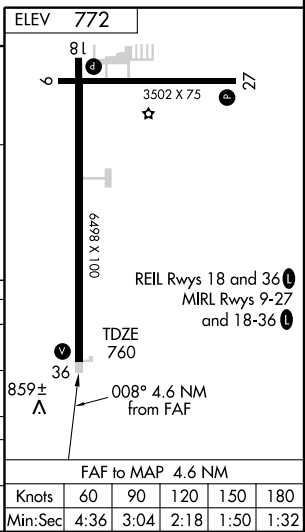
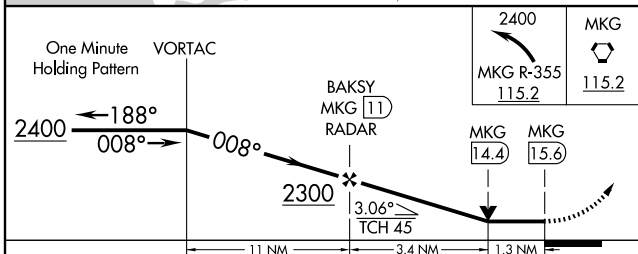
UNICOM  
**123.0 (CTAF)**



NoPT for arrivals on MKG VORTAC airway radials 076 CW 296.

EC-1, 22 OCT 2009 to 19 NOV 2009

EC-1, 22 OCT 2009 to 19 NOV 2009



CATEGORY	A	B	C	D
S-36	1200-1 440 (500-1)		1200-1¼ 440 (500-1¼)	1200-1½ 440 (500-1½)
CIRCLING	1260-1 488 (500-1)		1260-1½ 488 (500-1½)	1340-2 568 (600-2)
MUSKEGON ALTIMETER SETTING MINIMUMS				
S-36	1260-1 500 (600-1)		1260-1¼ 500 (600-1¼)	1260-1½ 500 (600-1½)
CIRCLING	1340-1 568 (600-1)		1340-1½ 568 (600-1½)	1340-2 568 (600-2)

FREMONT, MICHIGAN  
Amdt 7 08157

43°26'N - 86°00'W

# FREMONT MUNI (F'FX) VOR RWY 36

Knots	60	90	120	150	180
Min:Sec	4:36	3:04	2:18	1:50	1:32