

RNAV (GPS) RWY 18

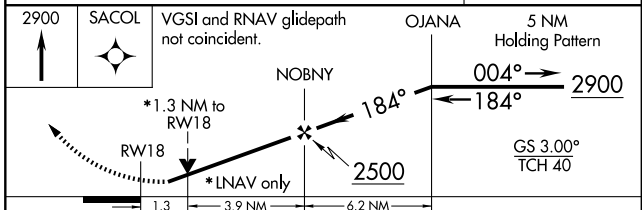
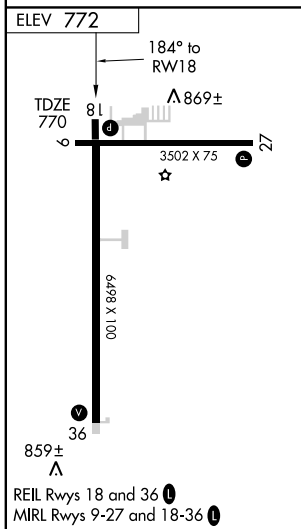
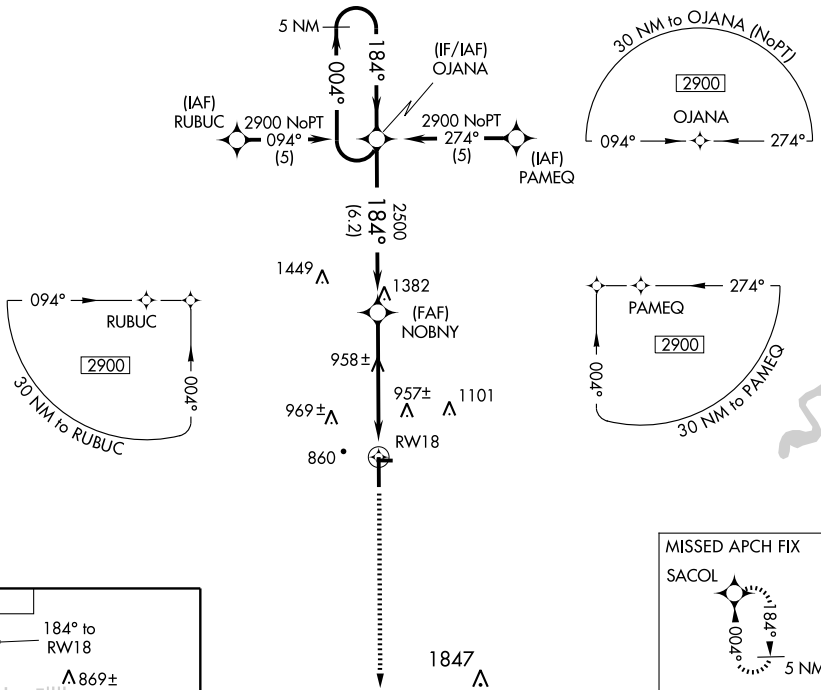
FREMONT MUNI (F'FX)

WAAS Chan 82405 W18A	APP CRS 184°	Rwy Idg TDZE Apt Elev	6498 770 772
--	------------------------	-----------------------------	---

⚠ When local altimeter setting not received, use Muskegon altimeter setting and increase all DA 65 feet, and all visibilities ¼ mile, increase all MDA 80 feet, and Cat C/D visibilities ½ mile. VDP NA when using Muskegon altimeter setting. Baro-VNAV NA when using Muskegon altimeter setting. For uncompensated Baro-VNAV systems, LNAV/VNAV NA below -16°C (4°F) or above 47°C (116°F). DME/DME RNP-0.3 NA. Visibility reduction by helicopters NA.

MISSED APPROACH:
Climb to 2900 direct SACOL and hold.

AWOS-3 118.775	MUSKEGON APP CON ★ 119.8 339.1	CLNC DEL 118.25	UNICOM 123.0 (CTAF) 0
--------------------------	--	---------------------------	---------------------------------



CATEGORY	A	B	C	D
LPV DA	1075-1 305 (400-1)			
LNAV/VNAV DA	1169-1½ 399 (400-1½)			
LNAV MDA	1220-1	450 (500-1)	1220-1¼ 450 (500-1¼)	1220-1½ 450 (500-1½)
CIRCLING	1260-1	488 (500-1)	1260-1½ 488 (500-1½)	1340-2 568 (600-2)