

COLDWATER, MICHIGAN

AL-5259 (FAA)

VOR/DME LFD 111.2 Chan 49	APP CRS 244°	Rwy Idg 5350 TDZE 959 Apt Elev 959
---	------------------------	---

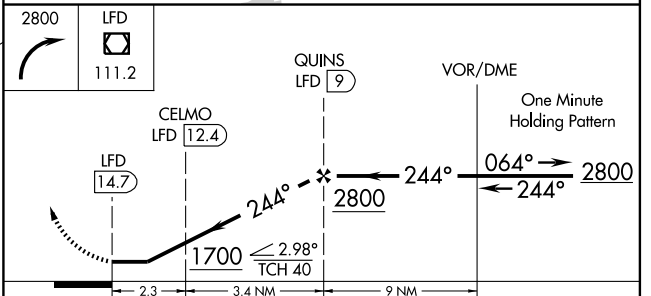
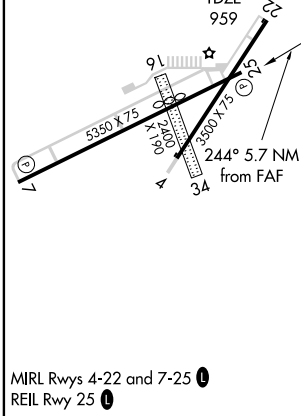
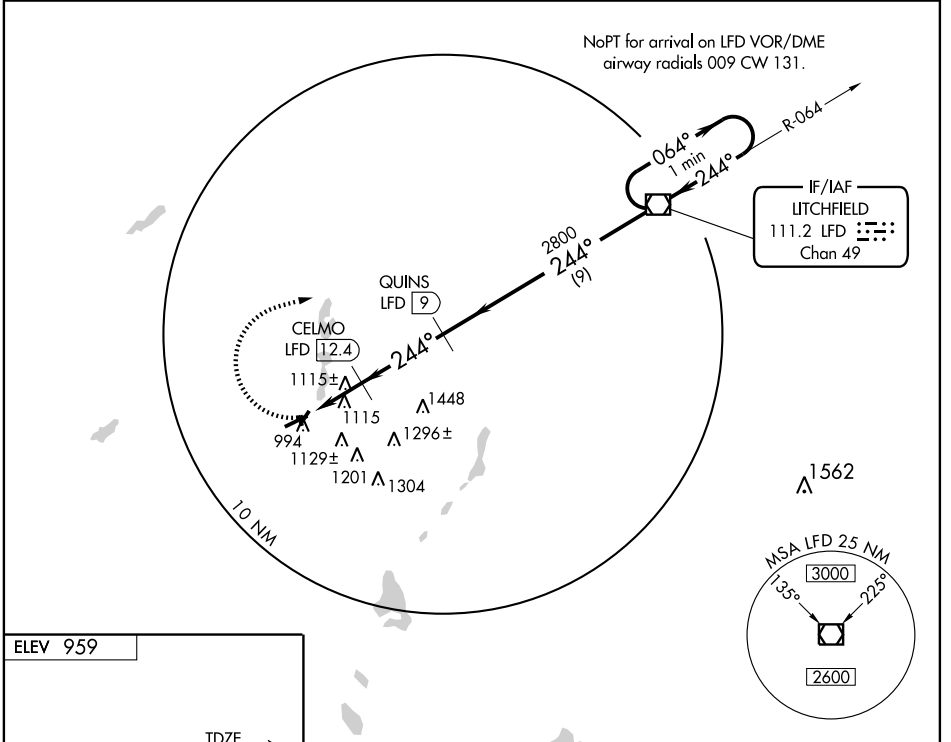
VOR/DME RWY 25

COLDWATER/ BRANCH COUNTY MEMORIAL (O/E/B)

⚠ When local altimeter setting not received, use Sturgis altimeter setting and increase all MDAs 60 feet and S-25 Cat C visibility 1/4 mile.
⚠ Circling to Rwy 16-34 NA. Visibility reduction by helicopters NA.

MISSED APPROACH: Climbing right turn to 2800 direct LFD VOR/DME and hold.

AWOS-3 118.125	KALAMAZOO APP CON * 121.2 340.9	GCO 121.725	UNICOM 122.7 (CTAF) 0
--------------------------	---	-----------------------	---------------------------------



CATEGORY	A	B	C	D
S-25	1420 - 1	461 (500-1)	1420 - 1 1/4 461 (500-1 1/4)	NA
CIRCLING	1420 - 1	461 (500-1)	1480 - 1 1/2 521 (600-1 1/2)	NA

COLDWATER, MICHIGAN
Orig 09183

COLDWATER/ BRANCH COUNTY MEMORIAL (O/E/B)
41°56'N - 85°03'W

VOR/DME RWY 25

EC-1, 22 OCT 2009 to 19 NOV 2009

EC-1, 22 OCT 2009 to 19 NOV 2009