

# VOR RWY 7

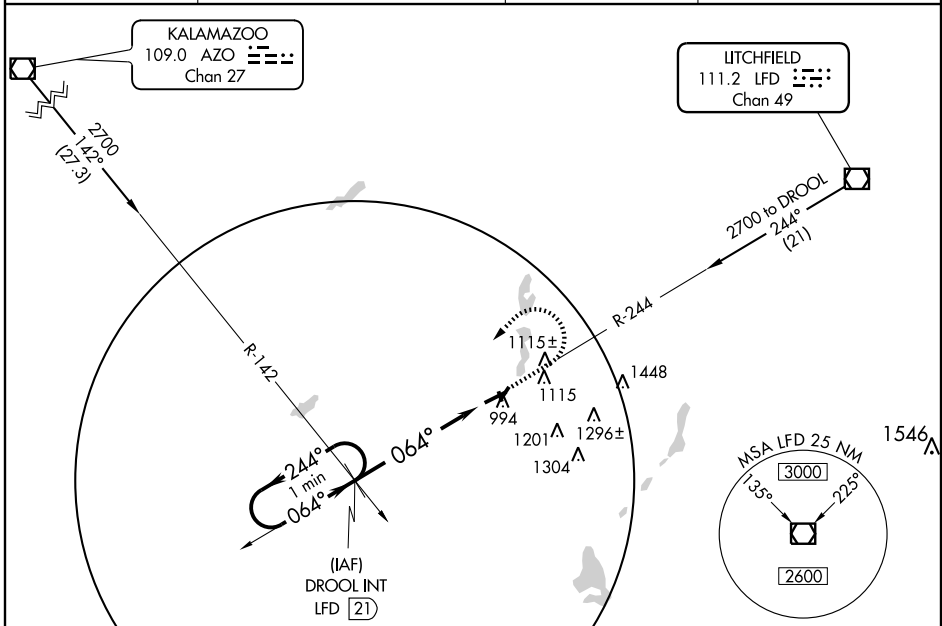
COLDWATER / BRANCH COUNTY MEMORIAL (O/E)B

VOR/DME LFD <b>111.2</b> Chan <b>49</b>	APP CRS <b>064°</b>	Rwy Idg <b>5350</b> TDZE <b>959</b> Apt Elev <b>959</b>
---	------------------------	---

**⚠** When local altimeter setting not received, use Sturgis altimeter setting and increase all MDAs 60 feet and S-7 Cat C visibility 1/4 mile.  
**⚠** Circling to Rwy 16-34 NA. Visibility reduction by helicopters NA.

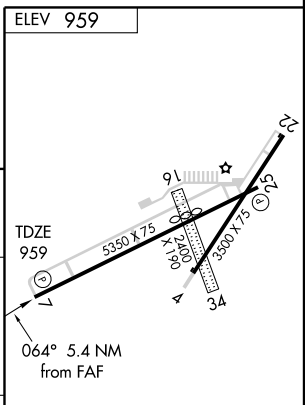
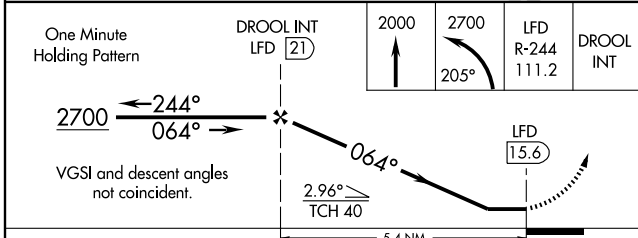
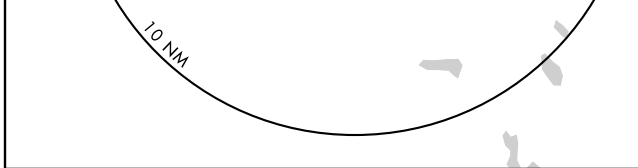
**MISSED APPROACH:** Climb to 2000 then climbing left turn to 2700 via heading 205° and LFD R-244 to DROOL INT/LFD 21 DME and hold.

AWOS-3 <b>118.125</b>	KALAMAZOO APP CON ★ <b>121.2 340.9</b>	GCO <b>121.725</b>	UNICOM <b>122.7 (CTAF) 0</b>
--------------------------	---	-----------------------	---------------------------------



EC-1, 22 OCT 2009 to 19 NOV 2009

EC-1, 22 OCT 2009 to 19 NOV 2009



CATEGORY	A	B	C	D
S-7	1440-1	481 (500-1)	1440-1 1/4 481 (500-1 1/4)	NA
CIRCLING	1440-1	481 (500-1)	1480-1 1/2 521 (600-1 1/2)	NA

MRL Rws 4-22 and 7-25  
 REIL Rwy 25  
 FAF to MAP 5.4 NM

Knots	60	90	120	150	180
Min:Sec	5:24	3:36	2:42	2:10	1:48