

COLDWATER, MICHIGAN

AL-5259 (FAA)

RNAV (GPS) RWY 7

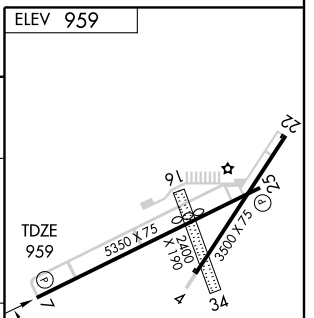
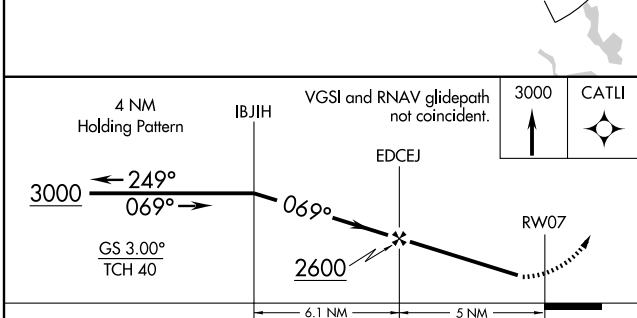
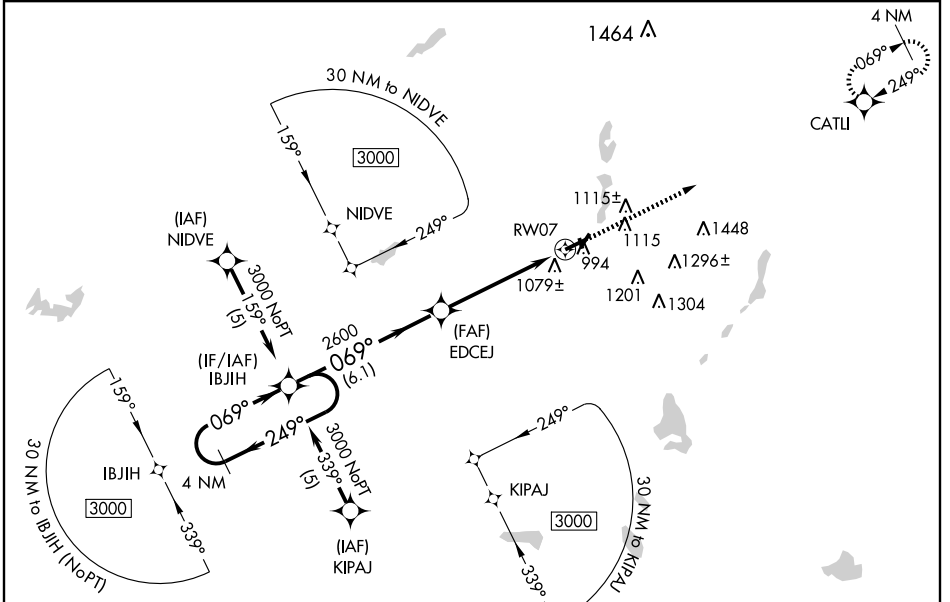
COLDWATER/BRANCH COUNTY MEMORIAL (O/E/B)

WAAS CH 56506 W07A	APP CRS 069°	Rwy Idg TDZE Apt Elev	5350 959 959
--	------------------------	-----------------------------	---

⚠ When local altimeter setting not received, use Sturgis altimeter setting and increase all DAs 48 feet and LPV visibility ¼ mile all Cats and all MDAs 60 feet and LNAV Cat C visibility ¼ mile. Baro-VNAV NA when using Sturgis altimeter setting. For uncompensated Baro-VNAV systems, LNAV/VNAV NA below -16°C (4°F) or above 54°C (130°F). DME/DME RNP-0.3 NA. Visibility reduction by helicopters NA. Circling to Rwy 16-34 NA.

MISSED APPROACH:
Climb to 3000 direct CATLI and hold.

AWOS-3 118.125	KALAMAZOO APP CON * 121.2 340.9	GCO 121.725	UNICOM 122.7 (CTAF) 0
--------------------------	---	-----------------------	---------------------------------



CATEGORY	A	B	C	D
LPV DA	1307-1¼	348 (400-1¼)		NA
LNAV/ VNAV DA	1418-1¾	459 (500-1¾)		NA
LNAV MDA	1420-1	461 (500-1)	1420-1¼ 461 (500-1¼)	NA
CIRCLING	1420-1	461 (500-1)	1480-1½ 521 (600-1½)	NA

MIRL Rws 4-22 and 7-25 0
REIL Rwy 25 0

EC-1, 22 OCT 2009 to 19 NOV 2009

EC-1, 22 OCT 2009 to 19 NOV 2009

COLDWATER, MICHIGAN
Amdt 1 09183

COLDWATER / BRANCH COUNTY MEMORIAL (O/E/B)
41°56'N - 85°03'W
RNAV (GPS) RWY 7