

COLDWATER, MICHIGAN

AL-5259 (FAA)

# RNAV (GPS) RWY 25

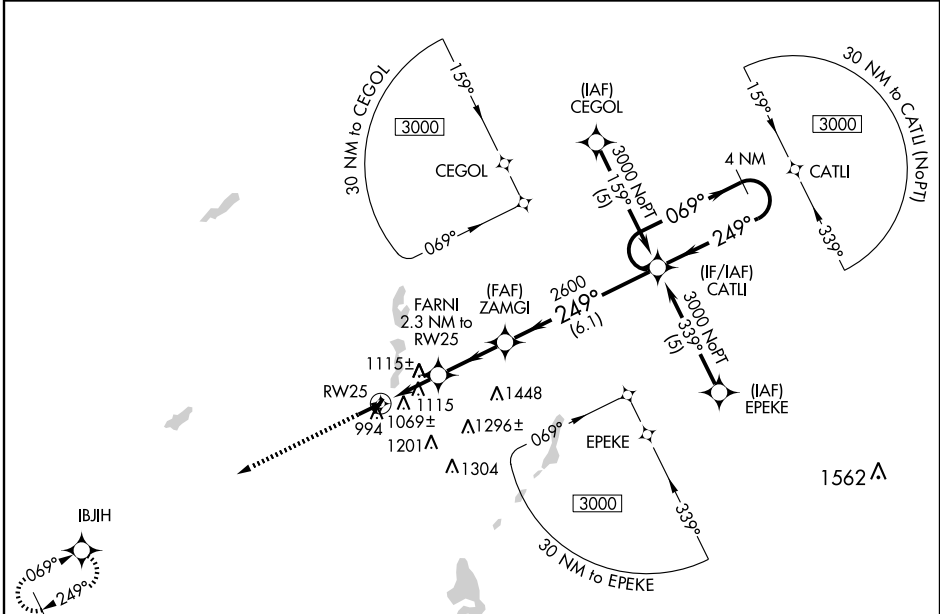
COLDWATER / BRANCH COUNTY MEMORIAL (O/E/B)

WAAS CH <b>99606</b> <b>W25A</b>	APP CRS <b>249°</b>	Rwy Idg <b>5350</b> TDZE <b>959</b> Apt Elev <b>959</b>
--	------------------------	---

**⚠** When local altimeter setting not received, use Sturgis altimeter setting and increase all DAs 48 feet and LPV visibility 1/4 mile all Cats and all MDAs 60 feet and LNAV Cat C visibility 1/4 mile.  
**⚠** Baro-VNAV NA when using Sturgis altimeter setting. For uncompensated Baro-VNAV systems, LNAV/VNAV NA below -16°C (4°F) or above 54°C (130°F). DME/DME RNP-0.3 NA. Visibility reduction by helicopters NA. Circling to Rwy 16-34 NA.

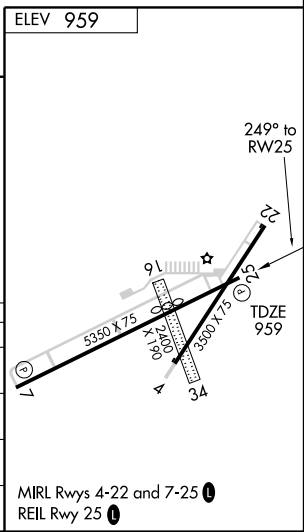
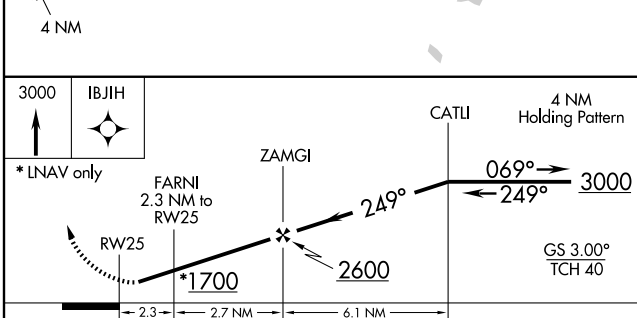
MISSED APPROACH:  
Climb to 3000 direct  
IBJIH and hold.

AWOS-3 <b>118.125</b>	KALAMAZOO APP CON * <b>121.2 340.9</b>	GCO <b>121.725</b>	UNICOM <b>122.7 (CTAF) 0</b>
--------------------------	---	-----------------------	---------------------------------



EC-1, 22 OCT 2009 to 19 NOV 2009

EC-1, 22 OCT 2009 to 19 NOV 2009



CATEGORY	A	B	C	D
LPV DA	1306-1¼	347 (400-1¼)		NA
LNAV/VNAV DA	1424-1¾	465 (500-1¾)		NA
LNAV MDA	1420-1	461 (500-1)	1420-1¼ 461 (500-1¼)	NA
CIRCLING	1420-1	461 (500-1)	1480-1½ 521 (600-1½)	NA

COLDWATER, MICHIGAN  
Orig 09183

COLDWATER / BRANCH COUNTY MEMORIAL (O/E/B)  
41°56'N - 85°03'W  
**RNAV (GPS) RWY 25**