

GRAND RAPIDS, MINNESOTA

AL-5258 (FAA)

VOR/DME GPZ 111.4 Chan 51	APP CRS 334°	Rwy Idg TDZE Apt Elev	5755 1355 1355
--	------------------------	-----------------------------	---

GRAND RAPIDS/
ITASCA COUNTY-GORDON NEWSTROM FIELD (GPZ)

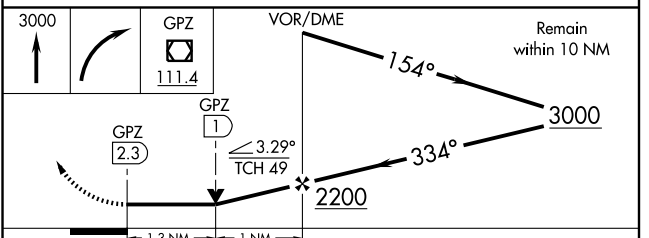
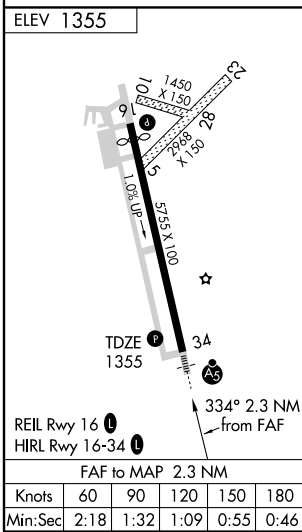
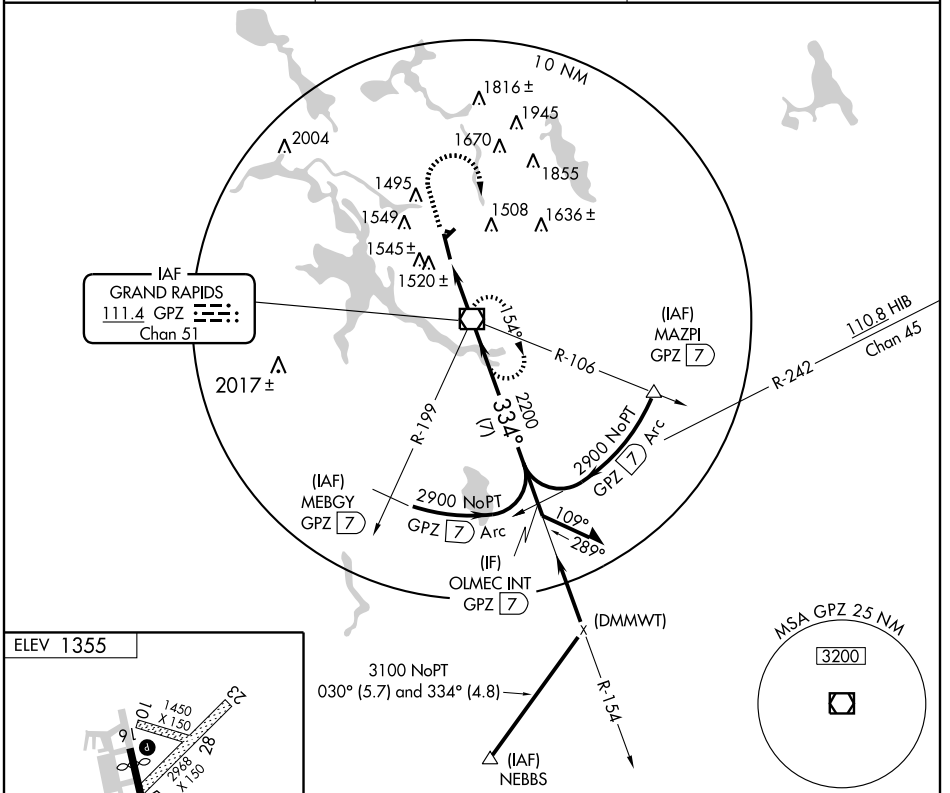
VOR RWY 34

⚠ Circling to Rwy 10-28 and 5-23 NA at night. When local altimeter setting not received, use Hibbing altimeter setting and increase all MDA 80 feet, increase S-34 Cat. C and D and Circling Cat C visibility ¼ mile. VDP NA when using Hibbing altimeter setting.

MALSR **AS**

MISSED APPROACH: Climb to 3000 then right turn direct GPZ VOR/DME and hold.

AWOS-3 118.425	MINNEAPOLIS CENTER 127.9 281.45	UNICOM 122.8 (CTAF) 0
--------------------------	---	---------------------------------



CATEGORY	A	B	C	D
S-34	1800-1/2	445 (500-1/2)	1800-3/4 445 (500-3/4)	1800-1 445 (500-1)
CIRCLING	1900-1	545 (600-1)	1900-1 1/2 545 (600-1 1/2)	1920-2 565 (600-2)

GRAND RAPIDS, MINNESOTA
Amdt 11 09295

GRAND RAPIDS/ITASCA COUNTY-GORDON NEWSTROM FIELD (GPZ)
47°13'N - 93°31'W

VOR RWY 34

NC-1, 22 OCT 2009 to 19 NOV 2009

NC-1, 22 OCT 2009 to 19 NOV 2009