

MANISTEE, MICHIGAN

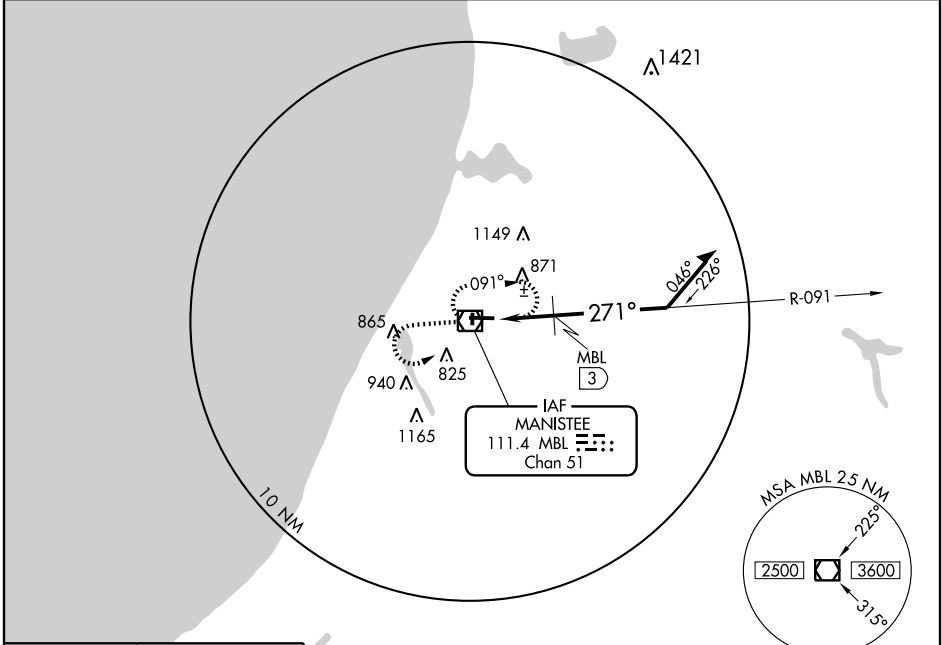
AL-5257 (FAA)

VOR/DME MBL 111.4 Chan 51	APP CRS 271°	Rwy Idg 5500 TDZE 621 Apt Elev 621
---	------------------------	---

VOR RWY 27
MANISTEE COUNTY-BLACKER (MBL)

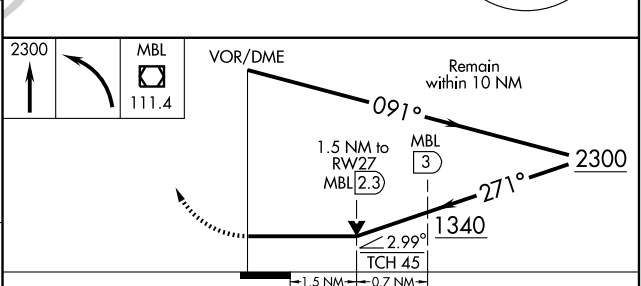
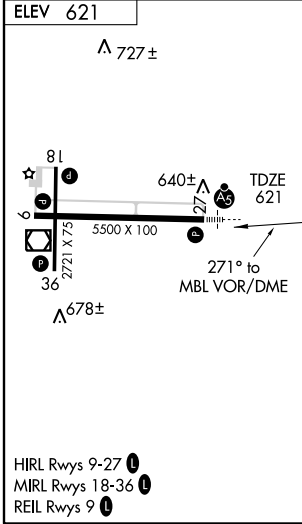
MALSR	MISSED APPROACH: Climb to 2300, then left turn direct MBL VOR/DME and hold.
-------	---

AWOS-3 111.4	LANSING RADIO 122.1R	UNICOM 122.8 (CTAF)
------------------------	--------------------------------	-------------------------------



EC-1, 22 OCT 2009 to 19 NOV 2009

EC-1, 22 OCT 2009 to 19 NOV 2009



CATEGORY	A	B	C	D
S-27	1340-½ 719 (800-½)		1340-1½ 719 (800-1½)	1340-1¾ 719 (800-1¾)
CIRCLING	1340-1 719 (800-1)		1340-2 719 (800-2)	1340-2½ 719 (800-2½)
DME MINIMUMS				
S-27	1140-½ 519 (600-½)		1140-1 519 (600-1)	1140-1¼ 519 (600-1¼)
CIRCLING	1140-1 519 (600-1)	1160-1 539 (600-1)	1180-1½ 559 (600-1½)	1300-2¼ 679 (700-2¼)

MANISTEE, MICHIGAN
Orig-A 08269

44°16'N - 86°15'W

MANISTEE COUNTY-BLACKER (MBL)
VOR RWY 27