

MANISTEE, MICHIGAN

AL-5257 (FAA)

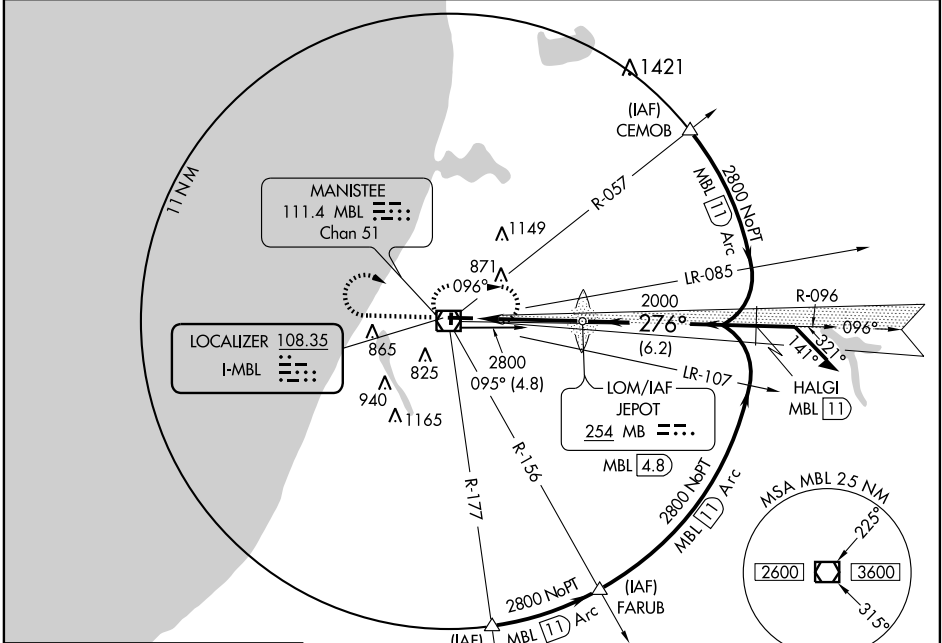
ILS RWY 27

MANISTEE COUNTY-BLACKER (MBL)

LOC I-MBL 108.35	APP CRS 276°	Rwy Idg 5500
		TDZE 621
		Apt Elev 621

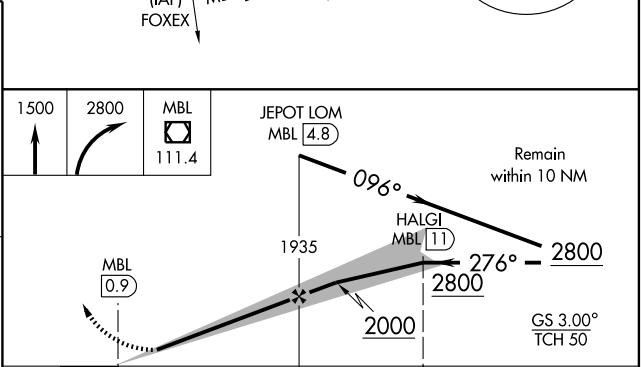
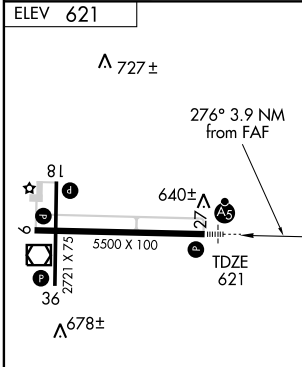
	MALSRR	MISSED APPROACH: Climb to 1500 then climbing right turn to 2800 direct MBL VOR/DME and hold.

AWOS-3 111.4	LANSING RADIO 122.1R	UNICOM 122.8 (CTAF) 0
------------------------	--------------------------------	---------------------------------



EC-1, 22 OCT 2009 to 19 NOV 2009

EC-1, 22 OCT 2009 to 19 NOV 2009



HIRL Rwy 9-27 MIRL Rwy 18-36 REIL Rwy 9	ELEV 621			
	276° 3.9 NM from FAF 640± TDZE 621 678±			
	CATEGORY A B C D			
	S-ILS 27 821-½ 200 (200-½)			
S-LOC 27 1080-½ 459 (500-½) 1080-¾ 459 (500-¾) 1080-1 459 (500-1)				
CIRCLING 1120-1 499 (500-1) 1160-1 539 (600-1) 1180-1½ 559 (600-1½) 1300-2¼ 679 (700-2¼)				

MANISTEE, MICHIGAN
Orig-A 08269

44°16'N - 86°15'W

MANISTEE COUNTY-BLACKER (MBL)

ILS RWY 27