

RNAV (GPS) RWY 5

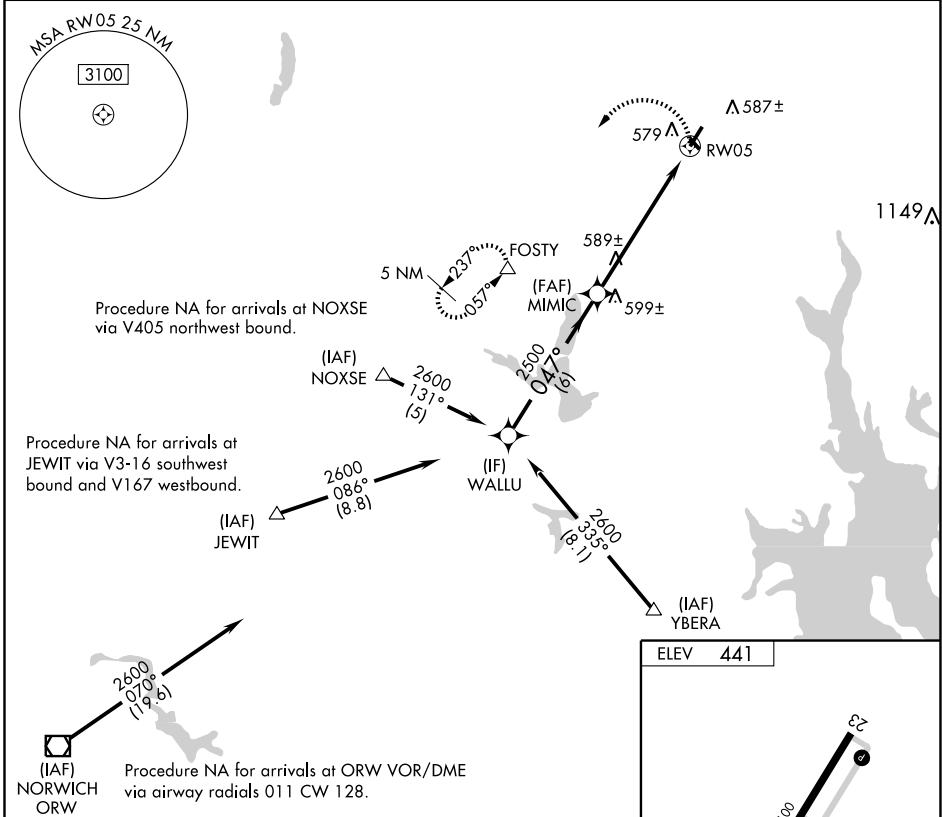
PAWTUCKET / NORTH CENTRAL STATE (SFZ)

APP CRS 047°	Rwy Idg 5000
	TDZE 429
	Apt Elev 441

⚠ Inoperative table does not apply to Cat C. DME/DME RNP-0.3 NA. Visibility reduction by helicopters NA. When local altimeter setting not received, use Providence altimeter setting and increase all MDA 100 feet, increase LNAV and Circling Cat C visibility ¼ mile. VDP NA when using Providence altimeter setting.

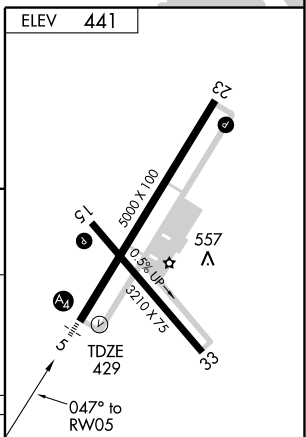
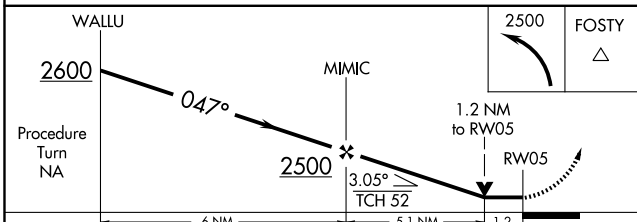
MALS
A MISSED APPROACH: Climbing left turn to 2500 direct FOSTY and hold.

AWOS-3 120.025	PROVIDENCE APP CON ★ 135.4 244.875	CINC DEL 124.35	UNICOM 123.075 (CTAF) 0
--------------------------	--	---------------------------	-----------------------------------



NE-1, 22 OCT 2009 to 19 NOV 2009

NE-1, 22 OCT 2009 to 19 NOV 2009



CATEGORY	A	B	C	D
LNAV MDA	860-¾ 431 (500-¾)		860-1¼ 431 (500-1¼)	NA
CIRCLING	980-1 539 (600-1)		980-1½ 539 (600-1½)	NA

HIRL Rwy 5-23 0
 MIRL Rwy 15-33 0
 REIL Rwy 15, 23 and 33 0

RNAV (GPS) RWY 5