

LOC RWY 5

PAWTUCKET / NORTH CENTRAL STATE (S/F/Z)

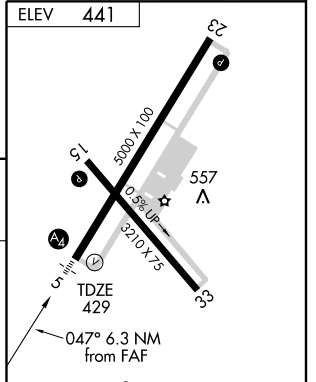
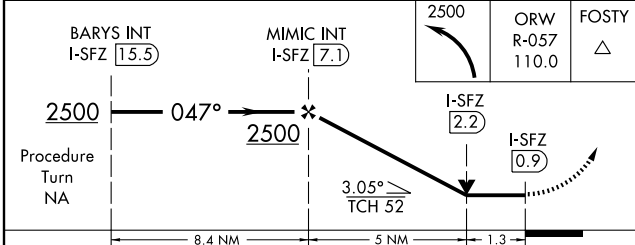
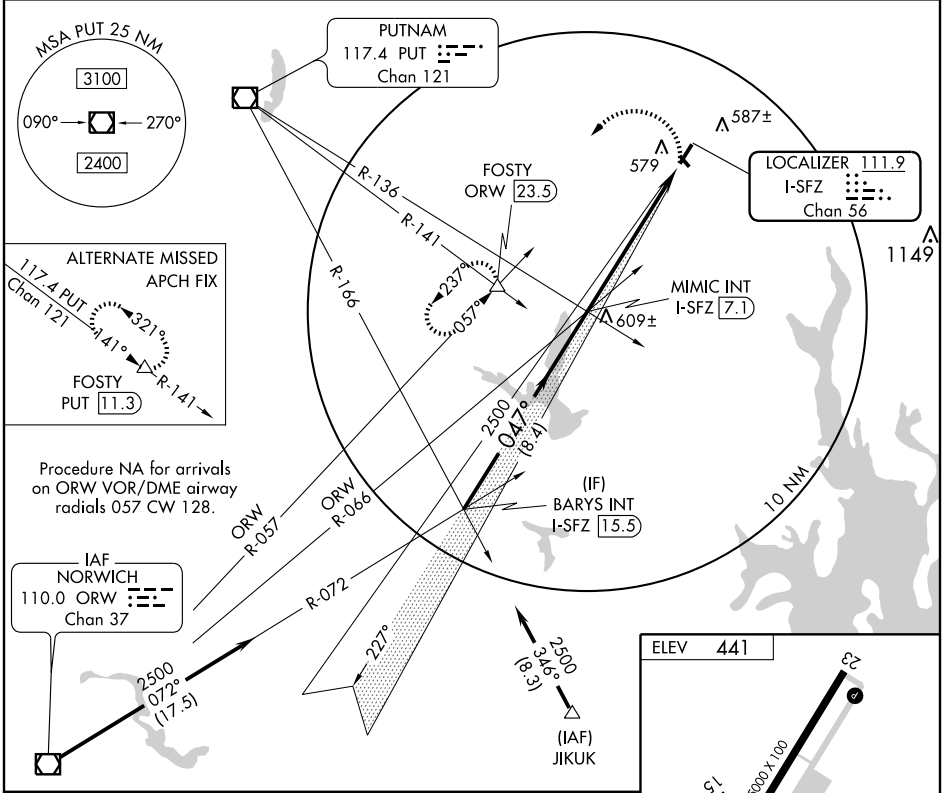
LOC/DME I-SFZ 111.9 Chan 56	APP CRS 047°	Rwy Idg 5000 TDZE 429 Apt Elev 441
---	------------------------	---

⚠ Visibility reduction by helicopters NA. When local altimeter setting not received, use Providence altimeter setting and increase all MDA 100 feet, increase S-5 and Circling Cat C visibility ¼ mile. Inoperative table does not apply to S-5 Cat C. VDP NA when using Providence altimeter setting.

⚠ NA

MALS MISSED APPROACH: Climbing left turn to 2500 ORW R-057 to FOSTY INT/ORW 23.5 DME and hold.

AWOS-3 120.025	PROVIDENCE APP CON ★ 135.4 244.875	CLNC DEL 124.35	UNICOM 123.075 (CTAF)
--------------------------	--	---------------------------	---------------------------------



CATEGORY	A	B	C	D
S-5	880-¾ 451 (500-¾)		880-1¼ 451 (500-1¼)	NA
CIRCLING	980-1 539 (600-1)		980-1½ 539 (600-1½)	NA

HIRL Rwy 5-23
 MIRL Rwy 15-33
 REIL Rws 15, 23 and 33
 FAF to MAP 6.3 NM

Knots	60	90	120	150	180
Min:Sec	6:18	4:12	3:09	2:31	2:06

LOC RWY 5

NE-1, 22 OCT 2009 to 19 NOV 2009

NE-1, 22 OCT 2009 to 19 NOV 2009