

WAAS CH 86813 W07A	APP CRS 067°	Rwy Idg TDZE Apt Elev	5600 3793 3793
--	------------------------	-----------------------------	---

RNAV (GPS) RWY 7

HOT SPRINGS/INGALLS FIELD (HSP)

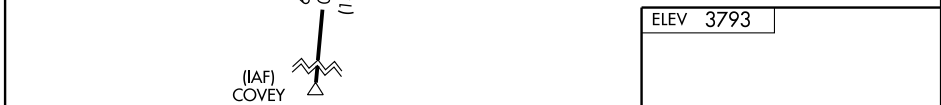
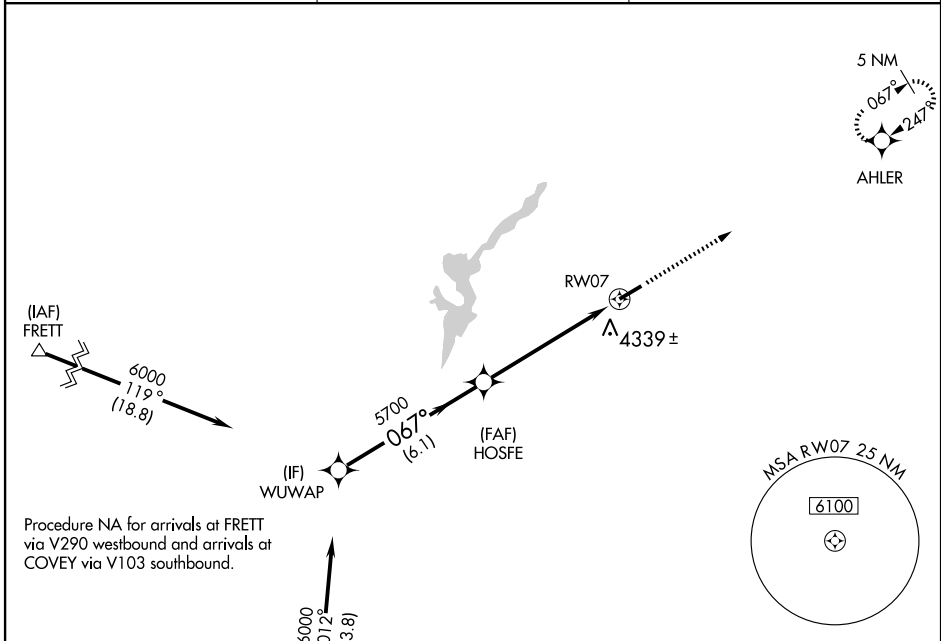
⚠ Circling NA southeast of Rwy 7-25. Baro-VNAV NA.
⚠ DME/DME RNP-0.3 NA. Visibility reduction by helicopters NA.
 When local altimeter setting not received, procedure NA.

MISSED APPROACH: Climb to 6000 direct AHLER and hold.

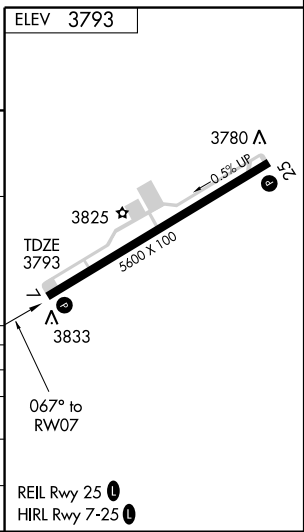
AWOS-3 118.8	WASHINGTON CENTER 134.4 353.9	UNICOM 123.0 (CTAF) 0
------------------------	---	---------------------------------

NE-3, 22 OCT 2009 to 19 NOV 2009

NE-3, 22 OCT 2009 to 19 NOV 2009



Procedure Turn NA	WUWAP	VGSIs and RNAV glidepath not coincident.	6000	AHLER
GS 3.00° TCH 60	6000	HOSFE	5700	RW07
	6.1 NM		5.7 NM	



CATEGORY	A	B	C	D
LPV DA	4143-1¼		350 (400-1¼)	
LNAV/VNAV DA	4619-3		826 (900-3)	
LNAV MDA	4700-1¼ 907 (1000-1¼)		4700-3 907 (1000-3)	
CIRCLING	4700-1¼ 907 (1000-1¼)		4700-3 907 (1000-3)	