

ILS or LOC RWY 25

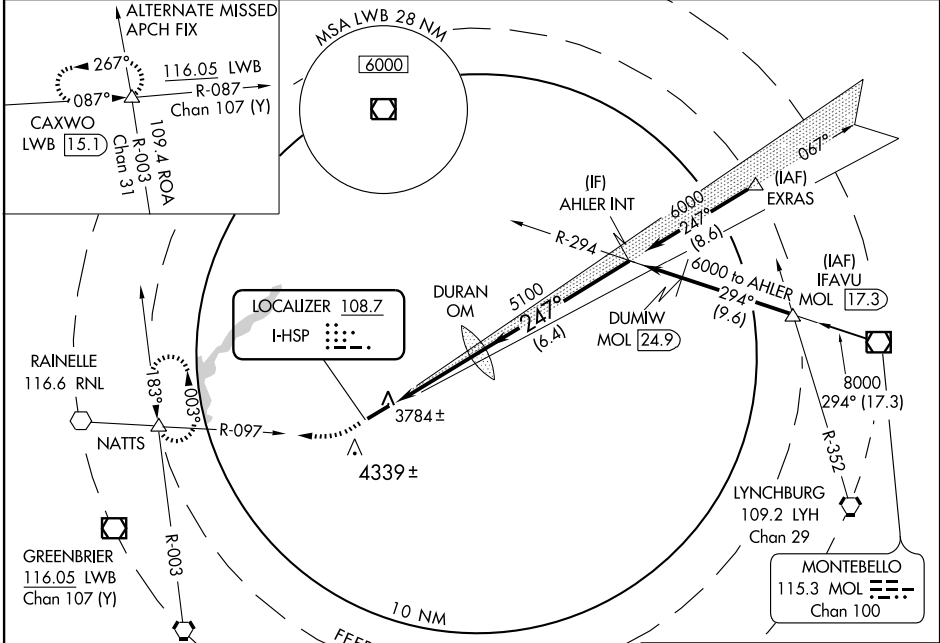
HOT SPRINGS/INGALLS FIELD (HSP)

LOC I-HSP 108.7	APP CRS 247°	Rwy Idg 5600
		TDZE 3773
		Apt Elev 3793

NA Circling NA southeast of Rwy 7-25. When local altimeter setting not received, procedure NA.

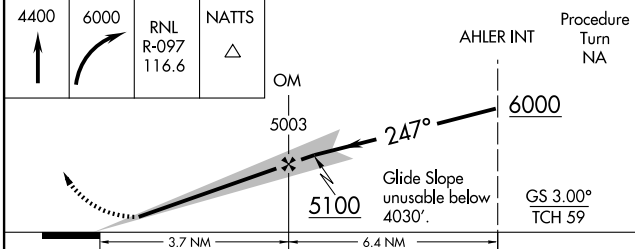
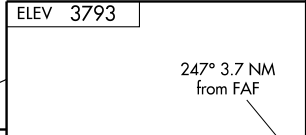
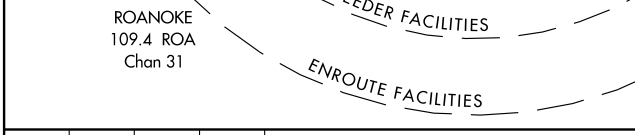
MISSED APPROACH: Climb to 4400 then climbing right turn to 6000 via RNL VOR R-097 to NATTS INT and hold.

AWOS-3 118.8	WASHINGTON CENTER 134.4 353.9	UNICOM 123.0 (CTAF)
------------------------	---	-------------------------------



NE-3, 22 OCT 2009 to 19 NOV 2009

NE-3, 22 OCT 2009 to 19 NOV 2009



CATEGORY	A	B	C	D
S-ILS 25		4088-1	315 (300-1)	
S-LOC 25	4240-1	467 (500-1)	4240-1½ 467 (500-1½)	4240-1½ 467 (500-1½)
CIRCLING	4440-1	647 (700-1)	4480-2 687 (700-2)	4480-2½ 687 (700-2½)

REIL Rwy 25	
HIRL Rwy 7-25	
FAF to MAP 3.7 NM	
Knots	60 90 120 150 180
Min:Sec	3:42 2:28 1:51 1:29 1:14