

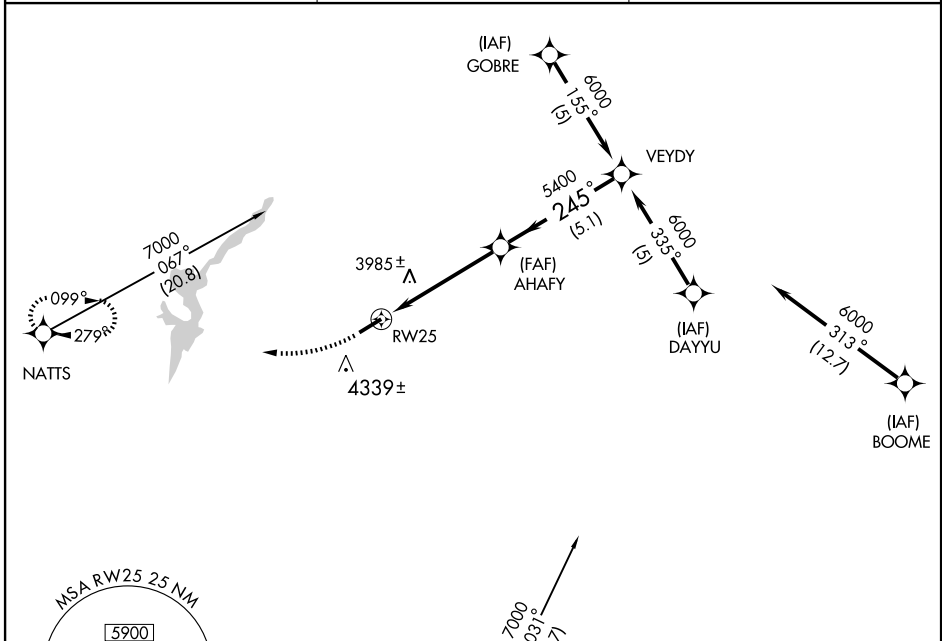
GPS RWY 25

HOT SPRINGS/INGALLS FIELD (HSP)

APP CRS 245°	Rwy Idg 5600
	TDZE 3772
	Apt Elev 3792

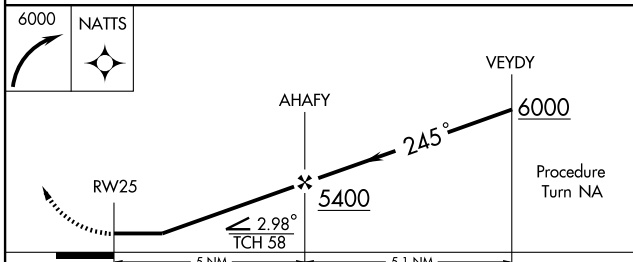
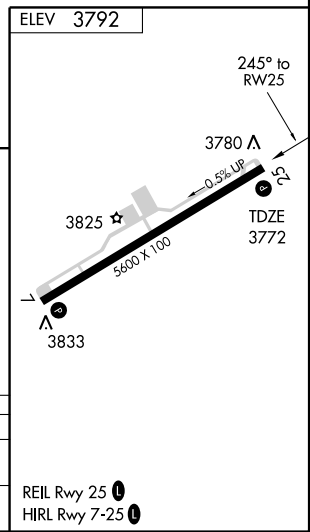
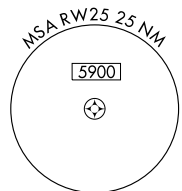
NA Circling NA SE of Rwy 7-25.	MISSED APPROACH: Climbing right turn to 6000 direct NATTS WP and hold.
-----------------------------------	--

AWOS-3 118.8	WASHINGTON CENTER 134.4 353.9	UNICOM 123.0 (CTAF)
------------------------	---	-------------------------------



NE-3, 22 OCT 2009 to 19 NOV 2009

NE-3, 22 OCT 2009 to 19 NOV 2009



CATEGORY	A	B	C	D
S-25	4440-1	668 (700-1)	4440-1 3/4 668 (700-1 3/4)	4440-2 668 (700-2)
CIRCLING	4840-1 1/4 1048 (1100-1 1/4)	4840-1 1/2 1048 (1100-1 1/2)	4840-3	1048 (1100-3)

REIL Rwy 25
HRL Rwy 7-25