

CODY, WYOMING

AL-5243 (FAA)

GPS-B

CODY/ YELLOWSTONE RGNL (C/D)

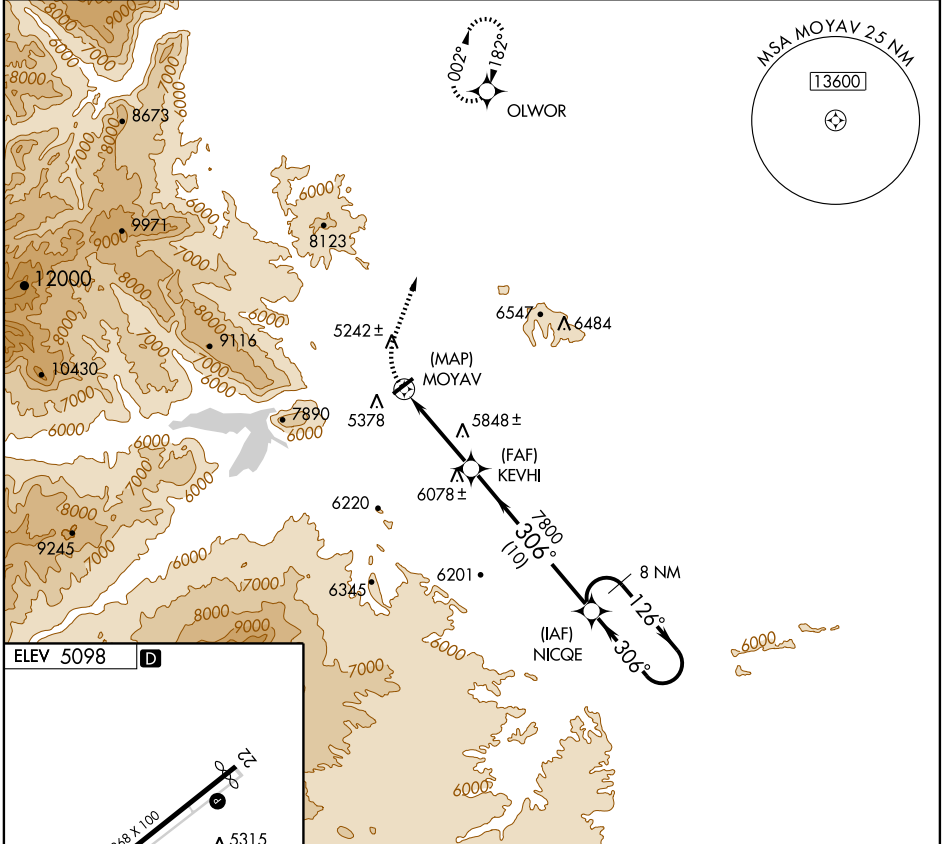
APP CRS 306°	Rwy Idg TDZE Apt Elev	N/A N/A 5098
------------------------	-----------------------------	-----------------------------------------

▽ △ NA	MISSED APPROACH: Climbing right turn to 6800 via 001° course to OLWOR WP and hold.
-------------------------	------------------------------------------------------------------------------------

AWOS-3 135.075

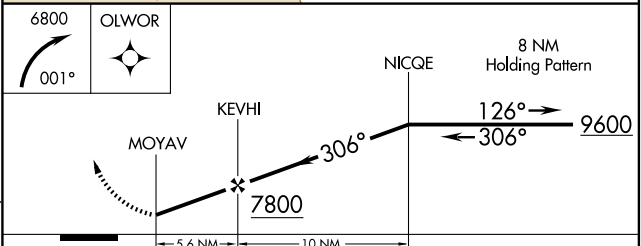
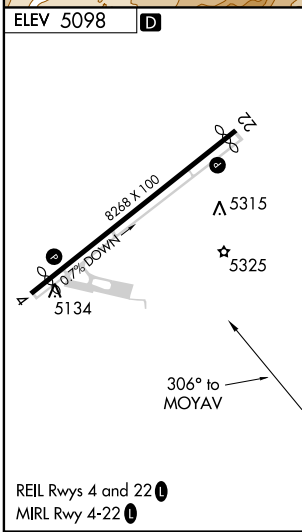
SALT LAKE CENTER 133.25 285.6

UNICOM 122.8 (CTAF) 0



NW-1, 22 OCT 2009 to 19 NOV 2009

NW-1, 22 OCT 2009 to 19 NOV 2009



CATEGORY	A	B	C	D
CIRCLING	6100-1¼ 1002 (1100-1¼)	6100-1½ 1002 (1100-1½)	6100-3	1002 (1100-3)

CODY, WYOMING
Orig 09015

CODY/ YELLOWSTONE RGNL (C/D)

44°31'N-109°01'W

GPS-B