

# RNAV (GPS) RWY 21

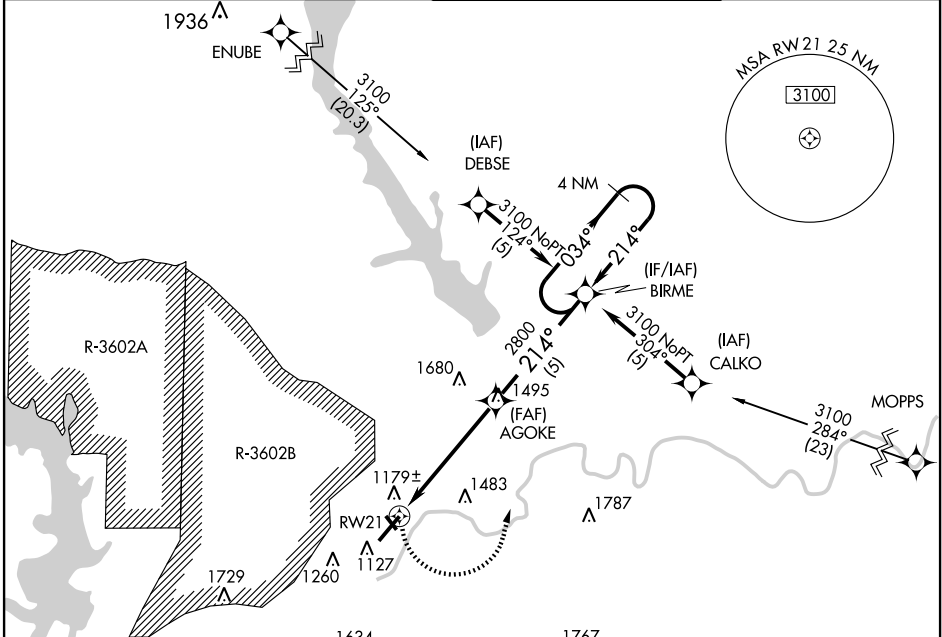
MANHATTAN RGNL (MHK)

APP CRS <b>214°</b>	Rwy Idg <b>7000</b>
	TDZE <b>1047</b>
	Apt Elev <b>1056</b>

**▽** GPS or RNP-0.3 required.  
**▲ NA** DME/DME RNP-0.3 NA.  
 Circling not authorized west of runway 3-21.

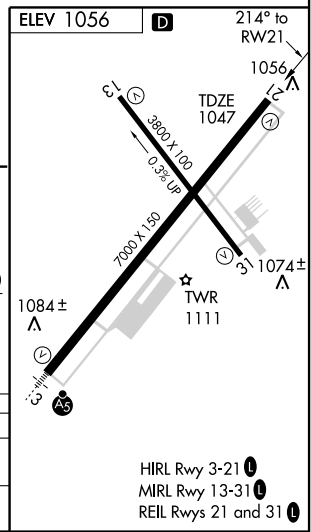
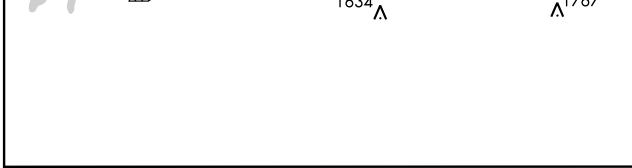
MISSED APPROACH: Climbing left turn to 3100 direct BIRME and hold.

ASOS <b>119.075</b>	KANSAS CITY CENTER <b>127.35 257.975</b>	MANHATTAN TOWER ★ <b>118.55 (CTAF)</b>	GND CON <b>121.85</b>
------------------------	---	---	--------------------------



NC-2, 22 OCT 2009 to 19 NOV 2009

NC-2, 22 OCT 2009 to 19 NOV 2009



3100	BIRME	4 NM	Holding Pattern
	AGOKE		
	RWY 21		
	2 NM	3.4 NM	5 NM

CATEGORY	A	B	C	D
LNVA MDA	1720-1	673 (700-1)	1720-2 673 (700-2)	1720-2¼ 673 (700-2¼)
CIRCLING	1720-1 664 (700-1)	1780-1 724 (800-1)	1780-2 724 (800-2)	1780-2¼ 724 (800-2¼)

HIRL Rwy 3-21 **1**  
 MIRL Rwy 13-31 **1**  
 REIL Rws 21 and 31 **1**