

WAAS CH 61309 W24A	APP CRS 244°	Rwy Idg TDZE Apt Elev	6701 1218 1239
--	------------------------	-----------------------------	---

RNAV (GPS) RWY 24

STATE COLLEGE/ UNIVERSITY PARK (UNV)

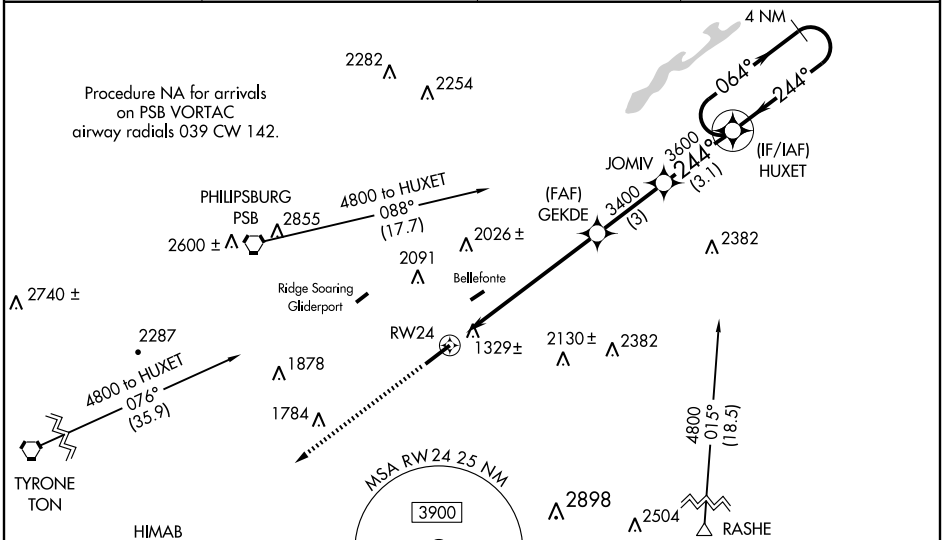
⚠ Circling NA NW of Rwy 6-24. When local altimeter setting not received, use Clearfield altimeter setting and increase LPV DA to 1522, LNAV/VNAV DA to 1739, and all MDA 120 feet; increase LNAV/VNAV all Cats visibility 1/2 mile, increase LNAV Cats C and D and Circling Cat D visibility 1/4 mile. VDP and Baro-VNAV NA when using Clearfield altimeter setting. For uncompensated Baro-VNAV systems, LNAV/VNAV NA below -17°C (2°F) or above 46°C (114°F). For inoperative MALS/R, increase LNAV Cat D visibility to 1 1/4 mile. For inoperative MALS/R when using Clearfield altimeter setting, increase LPV all Cats visibility to 1. DME/DME RNP-0.3 NA.

MALS/R



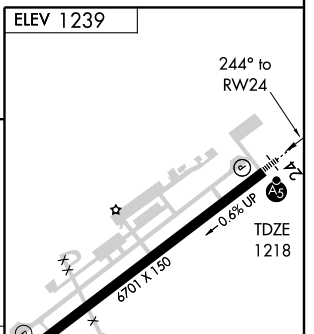
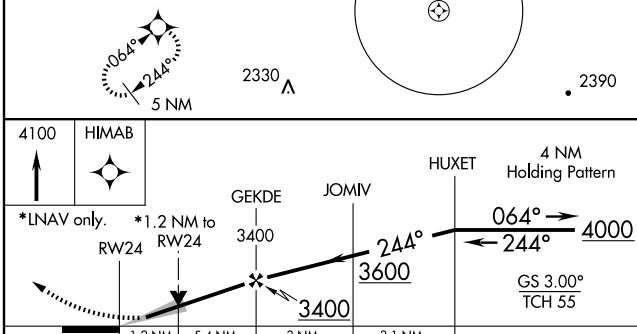
MISSED APPROACH:
Climb to 4100 direct HIMAB and hold.

AWOS-3 127.65	NEW YORK CENTER 134.8 338.3	CLNC DEL 118.55	UNICOM 122.8 (CTAF) 0
-------------------------	---------------------------------------	---------------------------	---------------------------------



NE-4, 22 OCT 2009 to 19 NOV 2009

NE-4, 22 OCT 2009 to 19 NOV 2009



CATEGORY	A	B	C	D
LPV DA	1418-1/2 200 (200-1/2)			
LNAV/VNAV DA	1635-1 417 (400-1)			
LNAV MDA	1620-1/2 402 (400-1/2)	1620-3/4 402 (400-3/4)	1620-1 402 (400-1)	
CIRCLING	1640-1 401 (500-1)	1700-1 461 (500-1)	1700-1 1/2 461 (500-1 1/2)	1800-2 561 (600-2)

ELEV 1239

REIL Rwy 6 0
HIRL Rwy 6-24 0