



LOC I-UNV <b>111.7</b>	APP CRS <b>244°</b>	Rwy Idg TDZE Apt Elev	<b>6701</b> <b>1218</b> <b>1239</b>
---------------------------	------------------------	-----------------------------	---


# ILS or LOC RWY 24

STATE COLLEGE / UNIVERSITY PARK (UNV)

**ADF Required.** Circling NA northwest of Rwy 6-24. When local altimeter setting not received, use Clearfield altimeter setting and increase S-ILS DA to 1522 and all MDA 120 feet; increase S-LOC Cats C and D and Circling Cat D visibility ¼ mile. For inoperative MALSRS when using Clearfield altimeter setting, increase S-ILS all Cats visibility to 1.

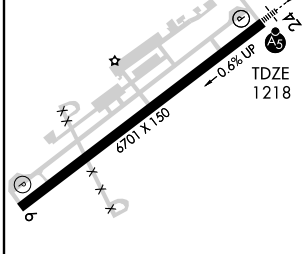
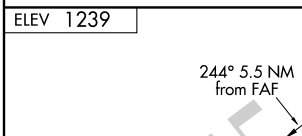
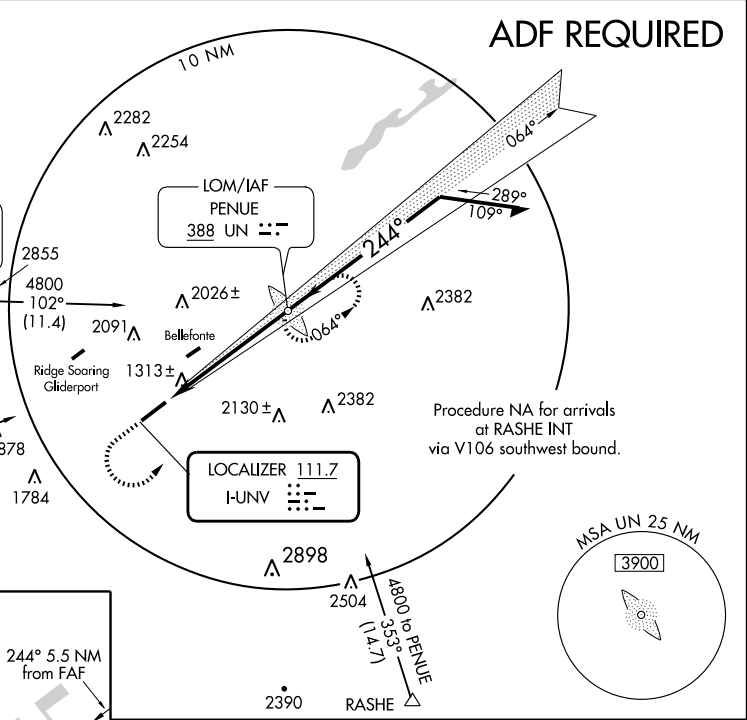
**MALSRS**  
  
**MISSED APPROACH:** Climb to 2600, then climbing left turn to 4000 direct PENUE LOM and hold.

AWOS-3 <b>127.65</b>	NEW YORK CENTER <b>134.8 338.3</b>	CLNC DEL <b>118.55</b>	UNICOM <b>122.8 (CTAF)</b> 
-------------------------	---------------------------------------	---------------------------	---


**ALTERNATE MISSED APCH FIX**  
  
**PHILIPSBURG PSB**  
 115.5  
 Chan 102

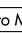
**PHILIPSBURG**  
 115.5 PSB  
 Chan 102

**TYRONE**  
 114.9 TON  
 Chan 96



CATEGORY	A	B	C	D
S-ILS 24		1418-½ 200 (200-½)		
S-LOC 24		1580-½ 362 (400-½)		1580-¾ 362 (400-¾)
CIRCLING	1640-1 401 (500-1)	1700-1 461 (500-1)	1700-1½ 461 (500-1½)	1800-2 561 (600-2)

REIL Rwy 6 

HIRL Rwy 6-24 

FAF to MAP 5.5 NM

Knots	60	90	120	150	180
Min:Sec	5:30	3:40	2:45	2:12	1:50

NE-4, 22 OCT 2009 to 19 NOV 2009

NE-4, 22 OCT 2009 to 19 NOV 2009