

RNAV (GPS) RWY 23

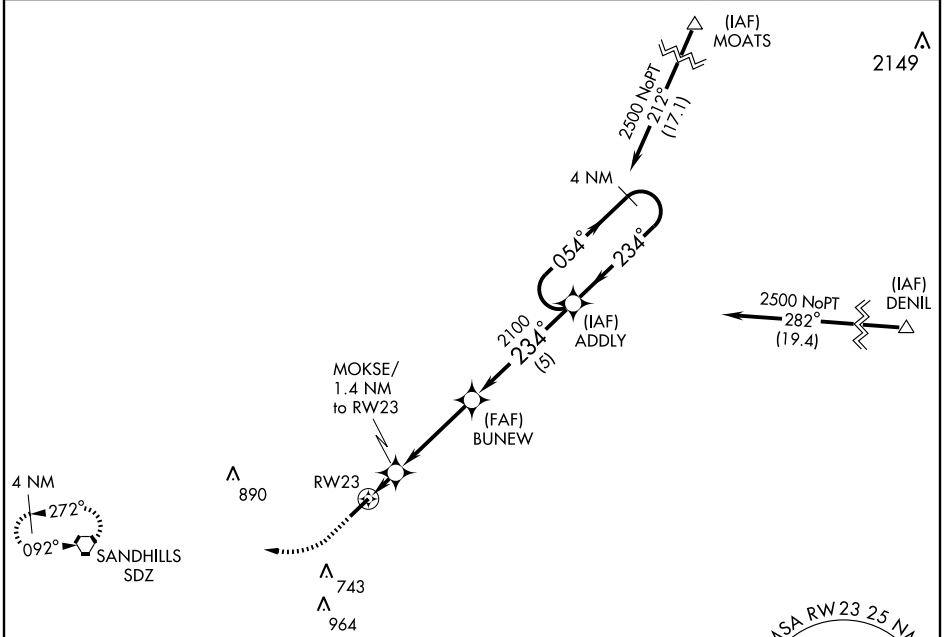
PINEHURST/SOUTHERN PINES/ MOORE COUNTY (SOP)

APP CRS 234°	Rwy Idg 5503
	TDZE 443
	Apt Elev 461

NA GPS or RNP-0.3 Required. DME/DME RNP-0.3 NA. If local altimeter setting not received, use Pope AFB altimeter setting and increase all MDAs 80 feet.

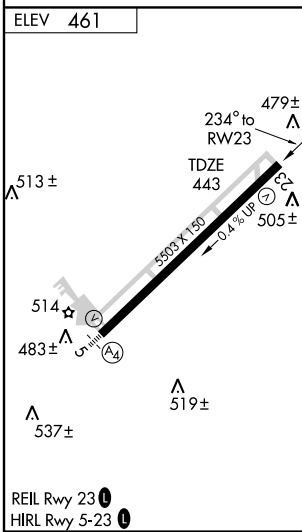
MISSED APPROACH: Climb to 1300 then climbing right turn to 3300 direct SDZ VORTAC and hold.

AWOS-3 127.575	FAYETTEVILLE APP CON 127.8 343.725	CLNC DEL 127.0	UNICOM 123.05 (CTAF) 0
--------------------------	--	--------------------------	----------------------------------



SE-2, 22 OCT 2009 to 19 NOV 2009

SE-2, 22 OCT 2009 to 19 NOV 2009



	ADDLY 4 NM Holding Pattern			
	1.4	3.7 NM	5 NM	
CATEGORY	A	B	C	D
LNAV MDA	760-1 317 (300-1)			
CIRCLING	840-1 379 (400-1)	920-1 459 (500-1)	920-1½ 459 (500-1½)	1020-2 559 (600-2)

RNAV (GPS) RWY 23