

# ILS RWY 5

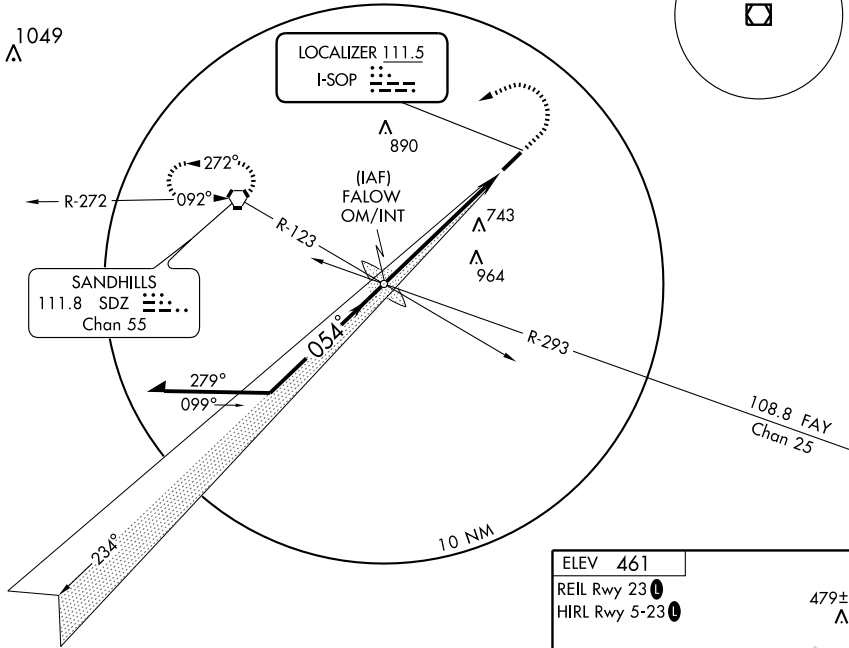
PINEHURST/SOUTHERN PINES/ MOORE COUNTY(SOP)

LOC I-SOP <b>111.5</b>	APP CRS <b>054°</b>	Rwy Idg <b>5503</b>
		TDZE <b>456</b>
		Apt Elev <b>461</b>

<p><b>NA</b> If local altimeter setting not received, use Pope AFB altimeter setting and increase DH to 790 feet; increase all MDAs 80 feet. Inoperative table does not apply to S-LOC 5 Cat. C.</p>	<p>MALS</p>	<p>MISSED APPROACH: Climb to 1400 then climbing left turn to 3300 via SDZ R-080 to SDZ VORTAC and hold.</p>
--	-------------	---

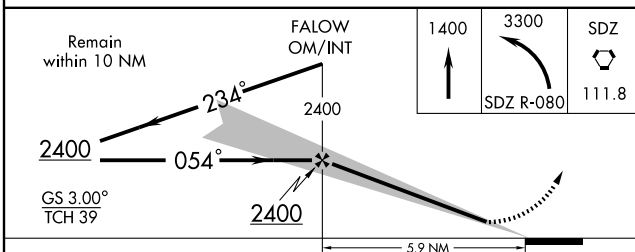
AWOS-3 <b>127.575</b>	FAYETTEVILLE APP CON <b>127.8 343.725</b>	CLNC DEL <b>127.0</b>	UNICOM <b>123.05</b> (CTAF) <b>0</b>
--------------------------	--	--------------------------	---

## RADAR REQUIRED



SE-2, 22 OCT 2009 to 19 NOV 2009

SE-2, 22 OCT 2009 to 19 NOV 2009



ELEV 461	REIL Rwy 23 <b>0</b>	479± <b>Λ</b>
	HIRL Rwy 5-23 <b>0</b>	

FAF to MAP 5.9 NM					
Knots	60	90	120	150	180
Min:Sec	5:54	3:56	2:57	2:22	1:58

CATEGORY	A	B	C	D
S-ILS 5	712-3/4		256 (300-3/4)	
S-LOC 5	940-3/4	484 (500-3/4)	940-1/4 484 (500-1/4)	940-1/2 484 (500-1/2)
CIRCLING	940-1	479 (500-1)	940-1/2 479 (500-1/2)	1020-2 559 (600-2)

# ILS RWY 5