

EVELETH, MINNESOTA

AL-5236 (FAA)

VOR/DME or GPS-A  
EVELETH-VIRGINIA MUNI (EVM)

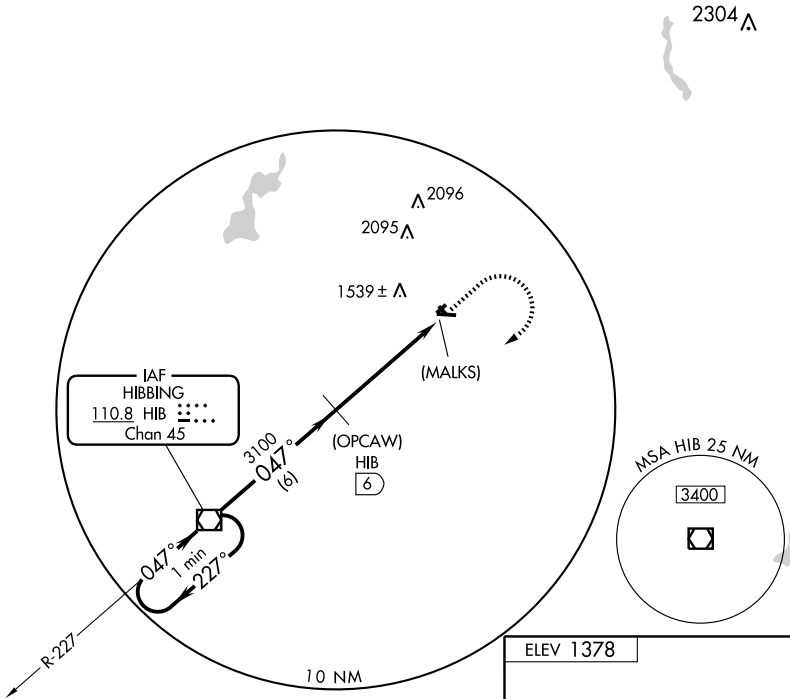
VOR/DME HIB <b>110.8</b> Chan 45	APP CRS <b>047°</b>	Rwy Idg TDZE Apt Elev <b>N/A</b> <b>N/A</b> <b>1378</b>
--	------------------------	--

MISSED APPROACH: Climb to 3100 then right turn direct HIB VOR/DME and hold.

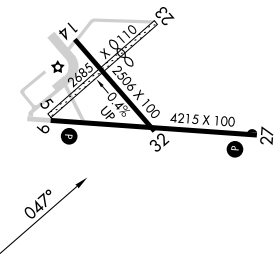
AWOS-3  
**108.2**

DULUTH APP CON ★  
**125.45 255.9**

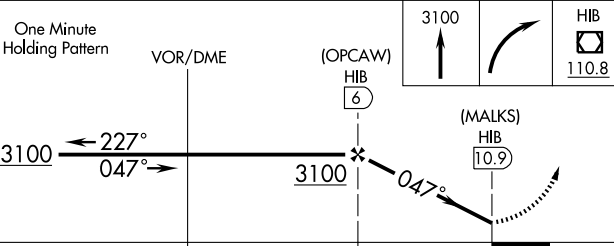
UNICOM  
**122.7 (CTAF)**



ELEV 1378



One Minute Holding Pattern



CATEGORY	A	B	C	D
CIRCLING	2120-1 742 (800-1)	2120-1¼ 742 (800-1¼)	2120-2¼ 742 (800-2¼)	2120-2½ 742 (800-2½)

REIL Rwy 27  
MIRL Rwys 9-27 and 14-32

NC-1, 22 OCT 2009 to 19 NOV 2009

NC-1, 22 OCT 2009 to 19 NOV 2009

EVELETH, MINNESOTA  
Amdt 1 09015

47°26'N-92°30'W

EVELETH-VIRGINIA MUNI (EVM)  
VOR/DME or GPS-A