

EVELETH, MINNESOTA

AL-5236 (FAA)

VOR/DME EVM 108.2 Chan 19	APP CRS 268°	Rwy Idg TDZE Apt Elev	4215 1369 1378
---	------------------------	-----------------------------	---

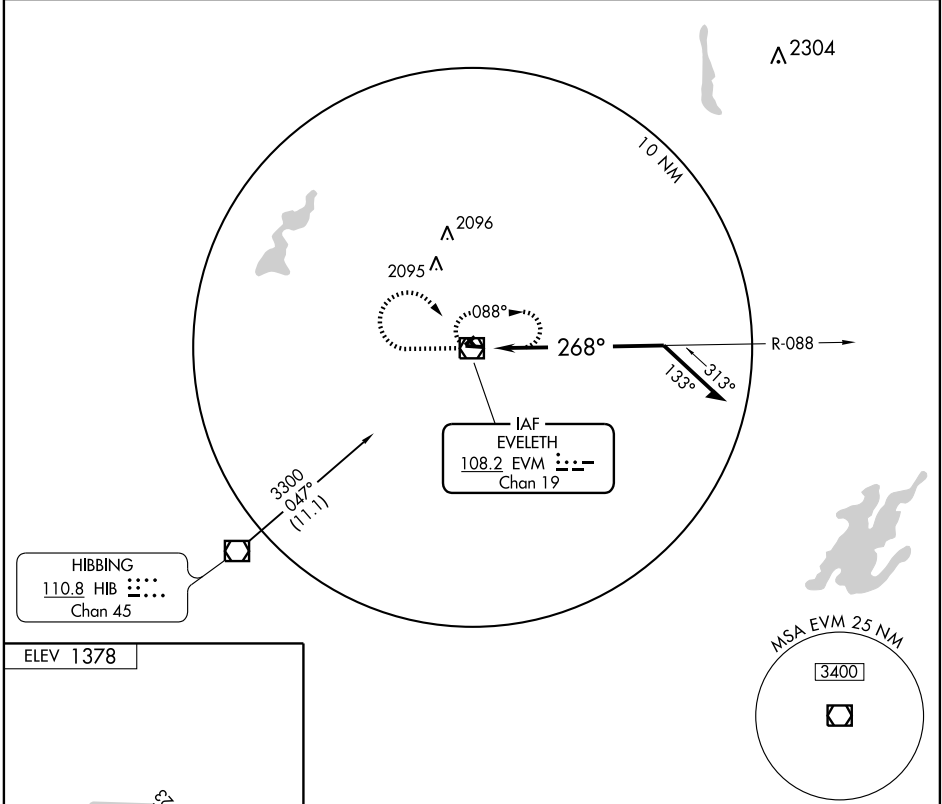
VOR RWY 27

EVELETH-VIRGINIA MUNI (EVM)

NA If local altimeter setting not received, use Chisholm-Hibbing altimeter setting and increase all MDAs 40 feet. VDP NA when using Chisholm-Hibbing altimeter setting.

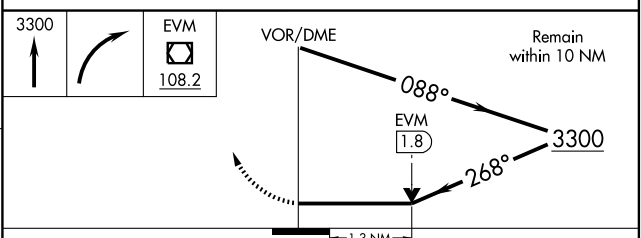
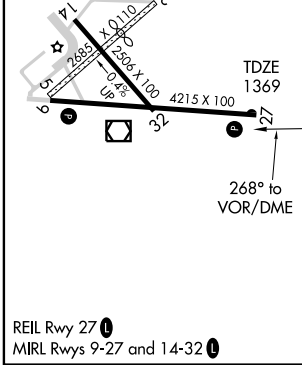
MISSED APPROACH: Climb to 3300 then right turn direct EVM VOR/DME and hold.

AWOS-3 108.2	DULUTH APP CON ★ 125.45 255.9	UNICOM 122.7 (CTAF) 0
------------------------	---	---------------------------------



NC-1, 22 OCT 2009 to 19 NOV 2009

NC-1, 22 OCT 2009 to 19 NOV 2009



CATEGORY	A	B	C	D
S-27	1820-1	451 (500-1)	1820-1¼ 451 (500-1¼)	1820-1½ 451 (500-1½)
CIRCLING	1900-1 522 (600-1)	1960-1 582 (600-1)	1980-1¾ 602 (700-1¾)	2040-2 662 (700-2)

EVELETH, MINNESOTA
Orig 09015

47°26'N-92°30'W

EVELETH-VIRGINIA MUNI (EVM)

VOR RWY 27