

EVELETH, MINNESOTA

AL-5236 (FAA)

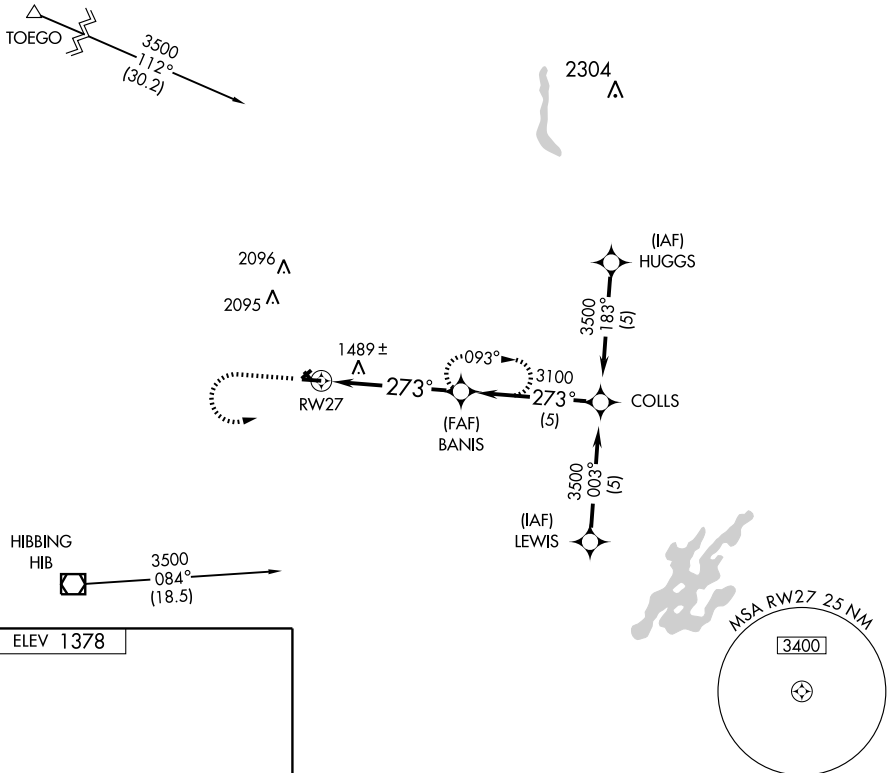
GPS RWY 27

EVELETH-VIRGINIA MUNI (EVM)

APP CRS 273°	Rwy Idg 4215
	TDZE 1369
	Apt Elev 1378

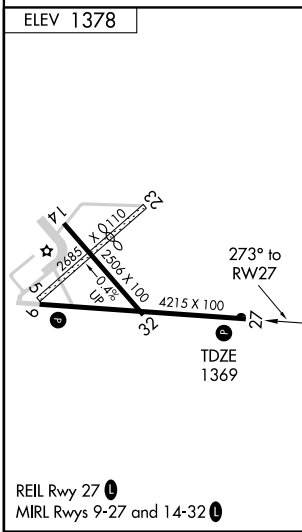
MISSED APPROACH: Climb to 1800 then left climbing turn to 3100 direct BANIS WP and hold.

AWOS-3 108.2	DULUTH APP CON ★ 125.45 255.9	UNICOM 122.7 (CTAF)
------------------------	---	-------------------------------



NC-1, 22 OCT 2009 to 19 NOV 2009

NC-1, 22 OCT 2009 to 19 NOV 2009



	1800	3100	BANIS	COLLS
	↑	↶		
	RWY27	3100	BANIS	3500
	↶	↗ 273°		Procedure Turn NA
	5 NM	5 NM		
CATEGORY	A	B	C	D
S-27	1740-1 371 (400-1)			1740-1¼ 371 (400-1¼)
CIRCLING	1920-1	542 (600-1)	1940-1½ 562 (600-1½)	2060-2¼ 682 (700-2¼)

EVELETH, MINNESOTA
Amdt 1A 09015

47°26'N-92°30'W

EVELETH-VIRGINIA MUNI (EVM)
GPS RWY 27