

YANKTON, SOUTH DAKOTA

AL-5235 (FAA)

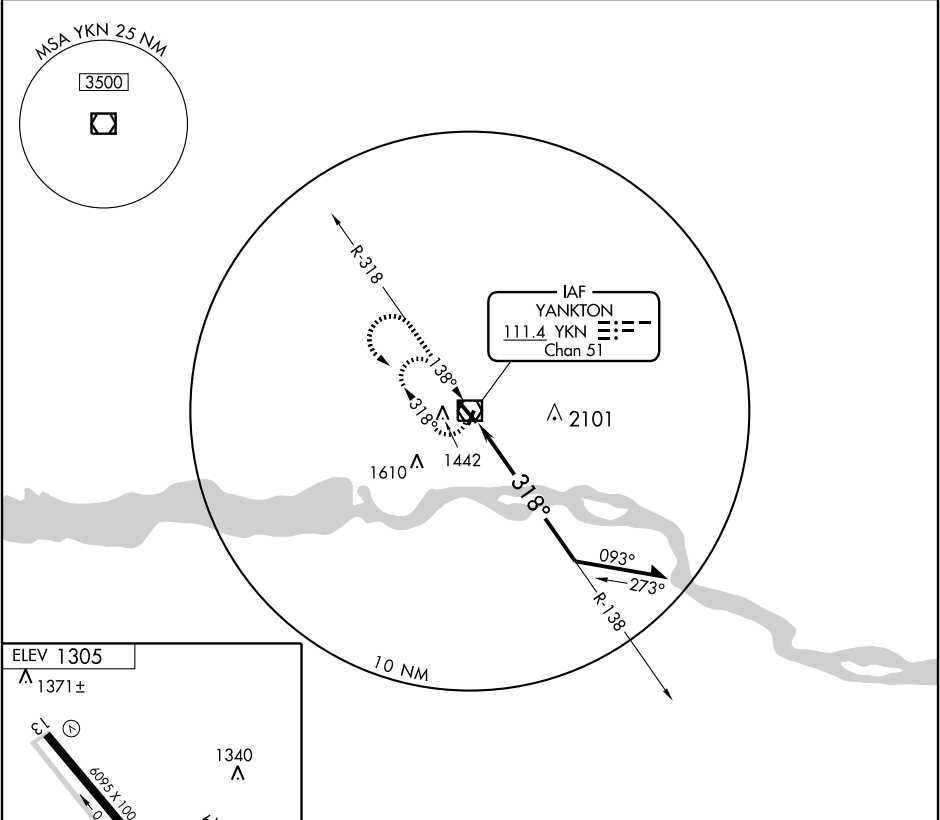
VOR/DME YKN <b>111.4</b> Chan 51	APP CRS <b>318°</b>	Rwy Idg TDZE Apt Elev	<b>6095</b> <b>1284</b> <b>1305</b>
--	------------------------	-----------------------------	---

# VOR RWY 31

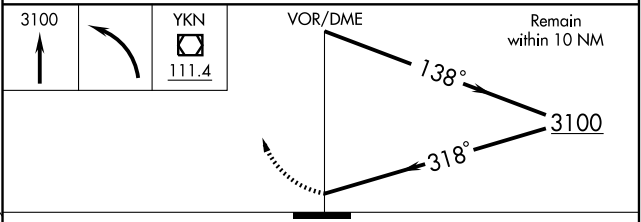
YANKTON/CHAN GURNEY MUNI (YKN)

		MISSED APPROACH: Climb to 3100, then left turn direct YKN VOR/DME and hold.

AWOS-3 <b>111.4</b>	MINNEAPOLIS CENTER <b>124.1 269.0</b>	HURON RADIO <b>122.55</b>	UNICOM <b>122.8</b> (CTAF)
------------------------	--	------------------------------	-------------------------------



REIL Rwy 13  
HIRL Rwy 1-19   
MIRL Rwy 13-31



CATEGORY	A	B	C	D
S-31	1980-1/2 696 (700-1/2)		1980-1 1/2 696 (700-1 1/2)	1980-1 3/4 696 (700-1 3/4)
CIRCLING	1980-1 675 (700-1)		1980-2 675 (700-2)	1980-2 1/4 675 (700-2 1/4)

YANKTON, SOUTH DAKOTA  
Amdt 3A 09015

42°55'N - 97°23'W

YANKTON/CHAN GURNEY MUNI (YKN)  
**VOR RWY 31**

NC-1, 22 OCT 2009 to 19 NOV 2009

NC-1, 22 OCT 2009 to 19 NOV 2009