

YANKTON, SOUTH DAKOTA

AL-5235 (FAA)

# RNAV (GPS) RWY 13

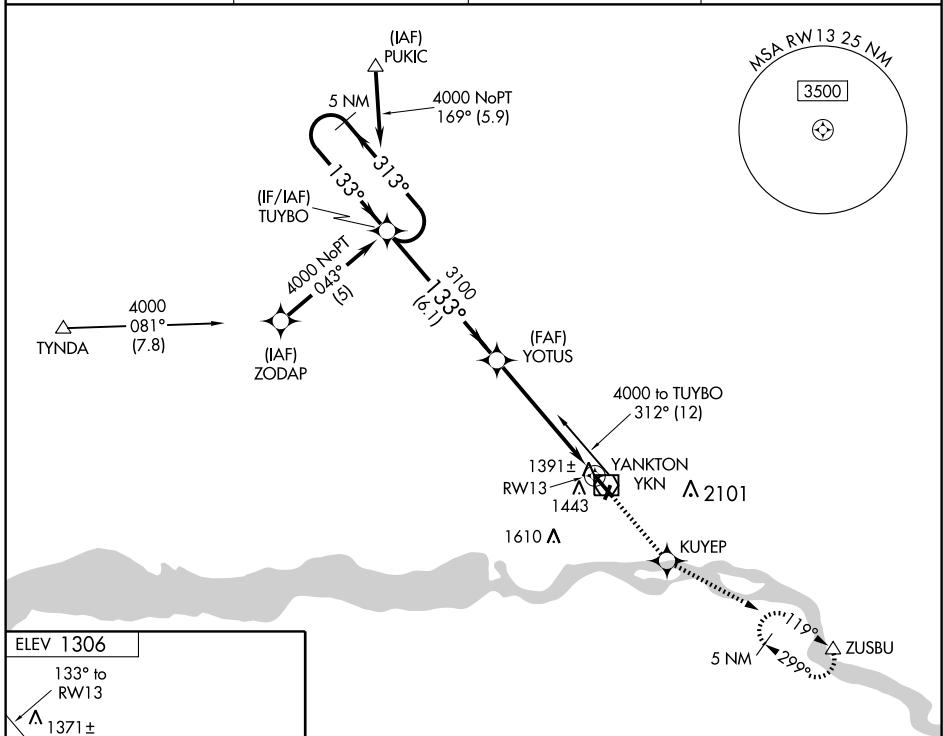
YANKTON/ CHAN GURNEY MUNI (YKN)

WAAS CH <b>50400</b> <b>W13A</b>	APP CRS <b>133°</b>	Rwy Idg TDZE <b>1306</b> Apt Elev <b>1306</b>	<b>6095</b>
--	------------------------	---	-------------

**⚠** If local altimeter setting not received, use Sioux Falls altimeter setting and increase all DAs/MDAs 140 feet.  
**⚠** DME/DME RNP -0.3 NA.  
 Visibility reduction by helicopters NA.

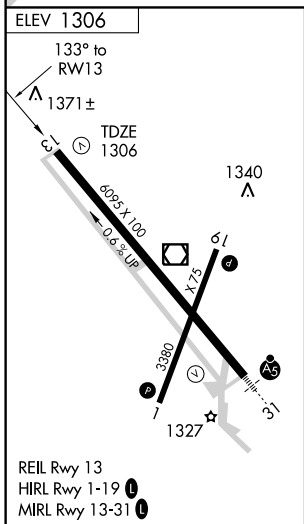
**MISSED APPROACH:** Climb to 4000 direct KUYEP and via 111° track to ZUSBU and hold, continue climb-in-hold to 4000.

AWOS-3 <b>111.4</b>	MINNEAPOLIS CENTER <b>124.1 269.0</b>	HURON RADIO <b>122.55</b>	UNICOM <b>122.8</b> (CTAF) <b>0</b>
------------------------	--	------------------------------	--



NC-1, 22 OCT 2009 to 19 NOV 2009

NC-1, 22 OCT 2009 to 19 NOV 2009



5 NM Holding Pattern TUYBO 4000 GS 3.00° TCH 40	4000 ↑	KUYEP ⬠	111° track	ZUSBU △
	*LNAV only *1.1 NM to RWY 13			
3100 6.1 NM		4.3 NM		1.1 NM
CATEGORY	A	B	C	D
LPV DA	1556-1 250 (300-1)			
LNAV MDA	1700-1 394 (400-1)		1700-1¼ 394 (400-1¼)	
CIRCLING	1780-1 474 (500-1)		1780-1½ 1860-2 554 (600-2)	

YANKTON, SOUTH DAKOTA  
 Orig-A 07074

42°55'N-97°23'W

YANKTON/CHAN GURNEY MUNI (YKN)  
**RNAV (GPS) RWY 13**