

YANKTON, SOUTH DAKOTA

AL-5235 (FAA)

NDB or GPS RWY 31

YANKTON/CHAN GURNEY MUNI (YKN)

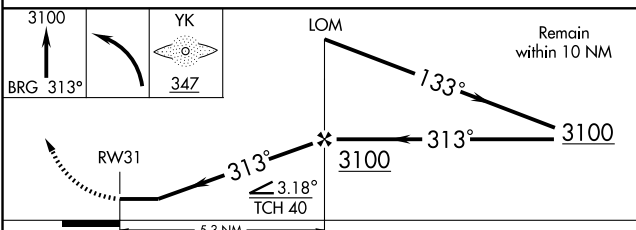
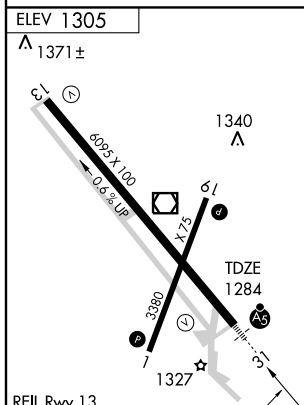
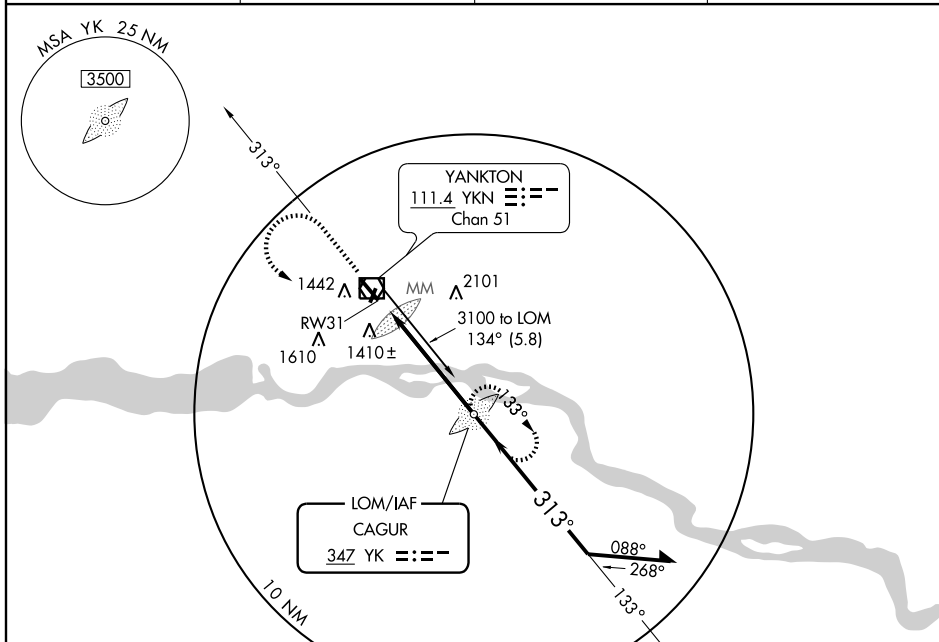
LOM YK 347	APP CRS 313°	Rwy Idg 6095
		TDZE 1284
		Apt Elev 1305

NA If local altimeter setting not received, use Sioux Falls altimeter setting and increase all MDAs 220 feet.



MISSED APPROACH: Climb to 3100 via YK LOM bearing 313° then left turn direct YK LOM and hold.

AWOS-3 111.4	MINNEAPOLIS CENTER 124.1 269.0	HURON RADIO 122.55	UNICOM 122.8 (CTAF)
------------------------	--	------------------------------	-------------------------------



CATEGORY	A	B	C	D
S-31	1720-¾ 436 (500-¾)		1720-1¼ 436 (500-1¼)	
CIRCLING	1780-1 475 (500-1)		1780-1½ 475 (500-1½)	1860-2 555 (600-2)

YANKTON, SOUTH DAKOTA
Amdt 2B 05132

42°55'N - 97°23'W

NDB or GPS RWY 31

NC-1, 22 OCT 2009 to 19 NOV 2009

NC-1, 22 OCT 2009 to 19 NOV 2009