

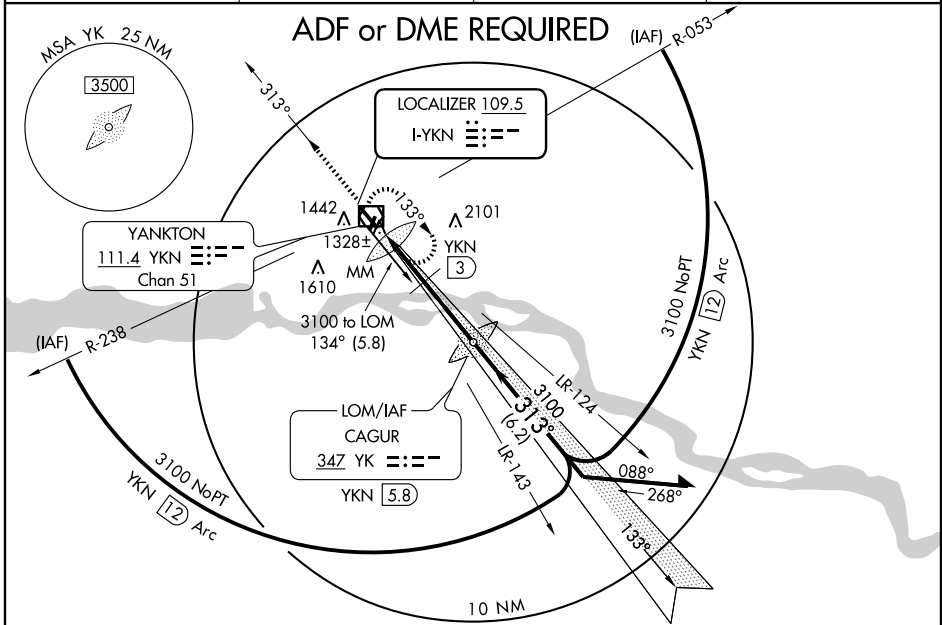
# ILS RWY 31

YANKTON/CHAN GURNEY MUNI (YKN)

LOC I-YKN <b>109.5</b>	APP CRS <b>313°</b>	Rwy Idg <b>6095</b>
		TDZE <b>1284</b>
		Apt Elev <b>1305</b>

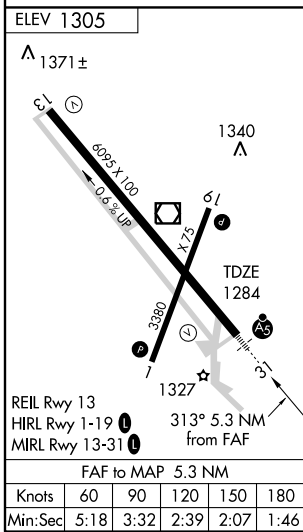
<p><b>V</b> DME minimums: for inoperative MALSR, increase S-LOC-31 Cat D visibility to 1 mile.</p> <p><b>NA</b></p>	<p>MALSR</p>	<p>MISSED APPROACH: Climb to 3100 then direct YKN VOR/DME and hold.</p>
---	--------------	---

AWOS-3 <b>111.4</b>	MINNEAPOLIS CENTER <b>124.1 269.0</b>	HURON RADIO <b>122.55</b>	UNICOM <b>122.8 (CTAF) 0</b>
------------------------	--	------------------------------	---------------------------------



NC-1, 22 OCT 2009 to 19 NOV 2009

NC-1, 22 OCT 2009 to 19 NOV 2009



	3100	YKN 111.4	LOM YKN 5.8	2464	Remain within 10 NM
	YKN 0.5	YKN 3	3042	133°	313° 3100
	0.5	2 NM	2.8 NM	1680	3100
					GS 3.00° TCH 51
CATEGORY	A	B	C	D	
S-ILS 31	1484-½ 200 (200-½)				
S-LOC 31	1680-½ 396 (400-½)			1680-¾ 396 (400-¾)	
CIRCLING	1780-1 475 (500-1)	1780-1½ 475 (500-1½)		1860-2 555 (600-2)	
DME MINIMUMS					
S-LOC 31	1580-½ 296 (300-½)			1580-¾ 296 (300-¾)	
CIRCLING	1780-1 475 (500-1)	1780-1½ 475 (500-1½)		1860-2 555 (600-2)	