

MITCHELL, SOUTH DAKOTA

AL-5234 (FAA)

RNAV (GPS) RWY 12

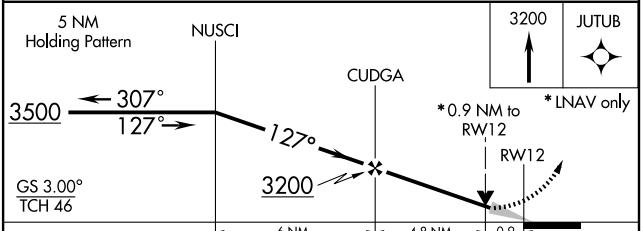
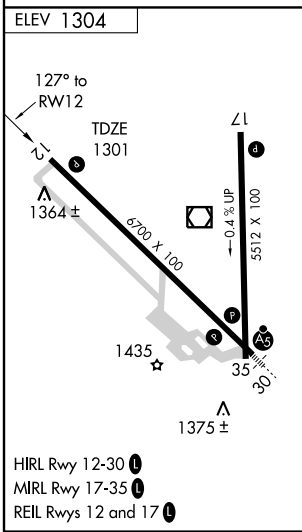
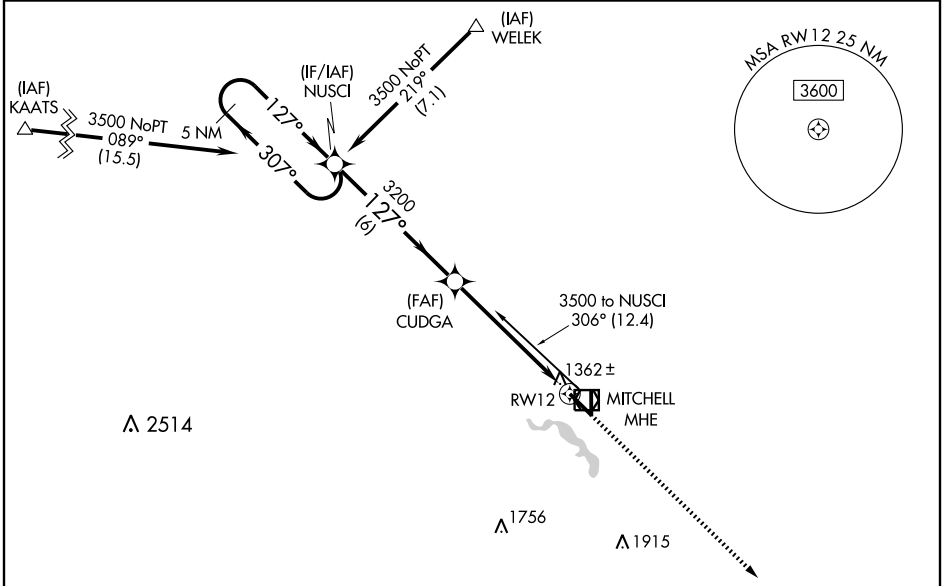
MITCHELL MUNI (MHE)

WAAS CH 77900 W12A	APP CRS 127°	Rwy Idg TDZE Apt Elev	6700 1301 1304
--	------------------------	-----------------------------	---

▽ DME/DME RNP-0.3 NA.
▲ For uncompensated Baro-VNAV systems, LNAV/VNAV NA below -17°C (2°F) or above 46°C (115°F).
 VDP and Baro VNAV NA with Huron Rgnl altimeter setting.
 If local altimeter setting not received, use Huron Rgnl altimeter setting and increase all DAs/MDAs 100 feet.

MISSED APPROACH: Climb to 3200 direct JUTUB and hold.

ASOS 124.175	HURON RADIO 122.3	UNICOM 122.8 (CTAF)
------------------------	-----------------------------	-------------------------------



CATEGORY	A	B	C	D
LPV DA	1575-1 274 (300-1)			
LNAV/VNAV DA	1627-1¼ 326 (400-1¼)			
LNAV MDA	1620-1 319 (400-1)			
CIRCLING	1740-1¼ 436 (500-1¼)	1760-1¼ 456 (500-1¼)	1760-1½ 456 (500-1½)	1860-2 556 (600-2)

MITCHELL, SOUTH DAKOTA
 Orig 07354

43°46'N-98°02'W

RNAV (GPS) RWY 12

NC-1, 22 OCT 2009 to 19 NOV 2009

NC-1, 22 OCT 2009 to 19 NOV 2009