

MITCHELL, SOUTH DAKOTA

AL-5234 (FAA)

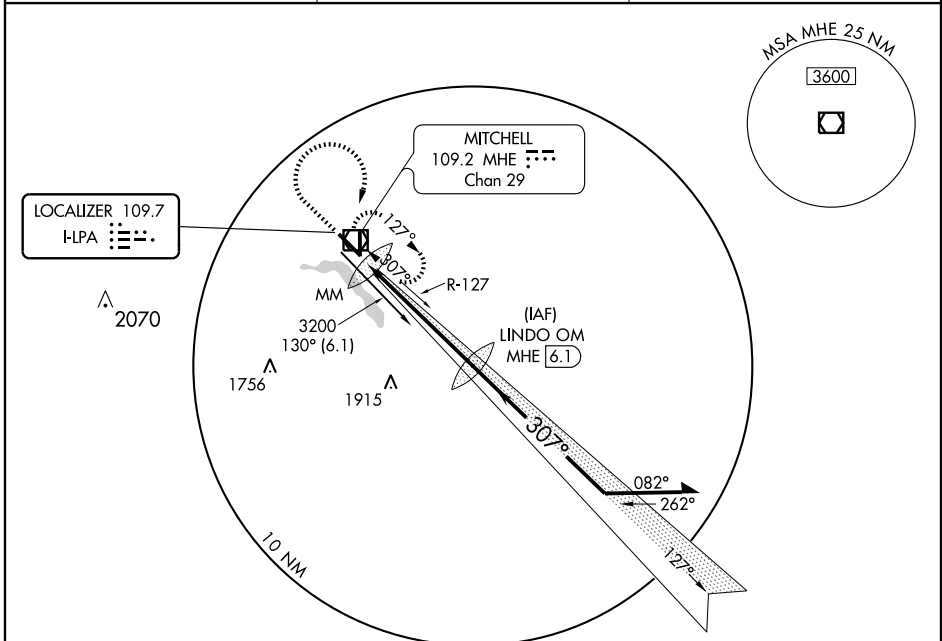
LOC I-HPA 109.7	APP CRS 307°	Rwy Idg TDZE Apt Elev	6700 1304 1304
---------------------------	------------------------	-----------------------------	---

ILS or LOC RWY 30

MITCHELL MUNI (MHE)

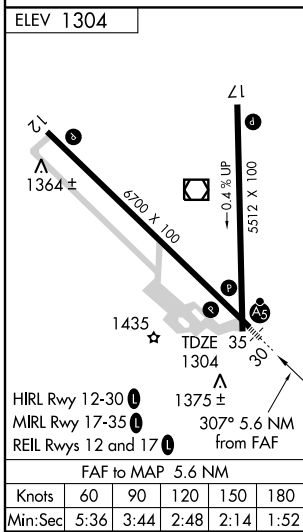
<p>▼</p> <p>▲ NA Autopilot coupled approach NA below 2174 MSL.</p>	<p>MALSR</p>	<p>MISSED APPROACH: Climb to 3200 then right turn direct MHE VOR/DME and hold.</p>
--	--------------	--

<p>ASOS</p> <p>124.175</p>	<p>HURON RADIO</p> <p>122.3</p>	<p>UNICOM</p> <p>122.8 (CTAF) 0</p>
-----------------------------------	--	--



NC-1, 22 OCT 2009 to 19 NOV 2009

NC-1, 22 OCT 2009 to 19 NOV 2009



DME REQUIRED

<p>3200</p> <p>↑</p>	<p>MHE</p> <p>109.2</p>	<p>LINDO OM MHE 6.1</p> <p>3183</p> <p>127°</p> <p>307°</p> <p>3200</p> <p>3200</p> <p>GS 3.00°</p> <p>TCH 57</p>	<p>Remain within 10 NM</p>	
<p>0.4 5.2 NM</p>				
CATEGORY	A	B	C	D
S-ILS 30	1504-½		200 (200-½)	
S-LOC 30	1700-½		396 (400-½)	
CIRCLING	1740-1 436 (500-1)	1760-1 456 (500-1)	1760-1½ 456 (500-1½)	1860-2 556 (600-2)

MITCHELL, SOUTH DAKOTA
Orig-A 08157

43°46'N-98°02'W

ILS or LOC RWY 30

MITCHELL MUNI (MHE)