

NEWTON, IOWA

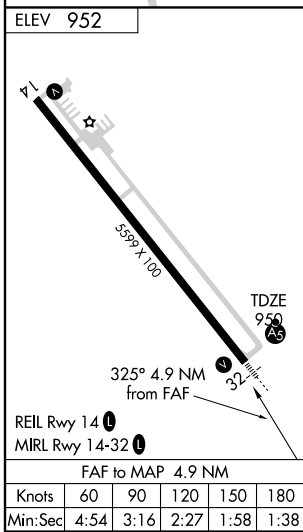
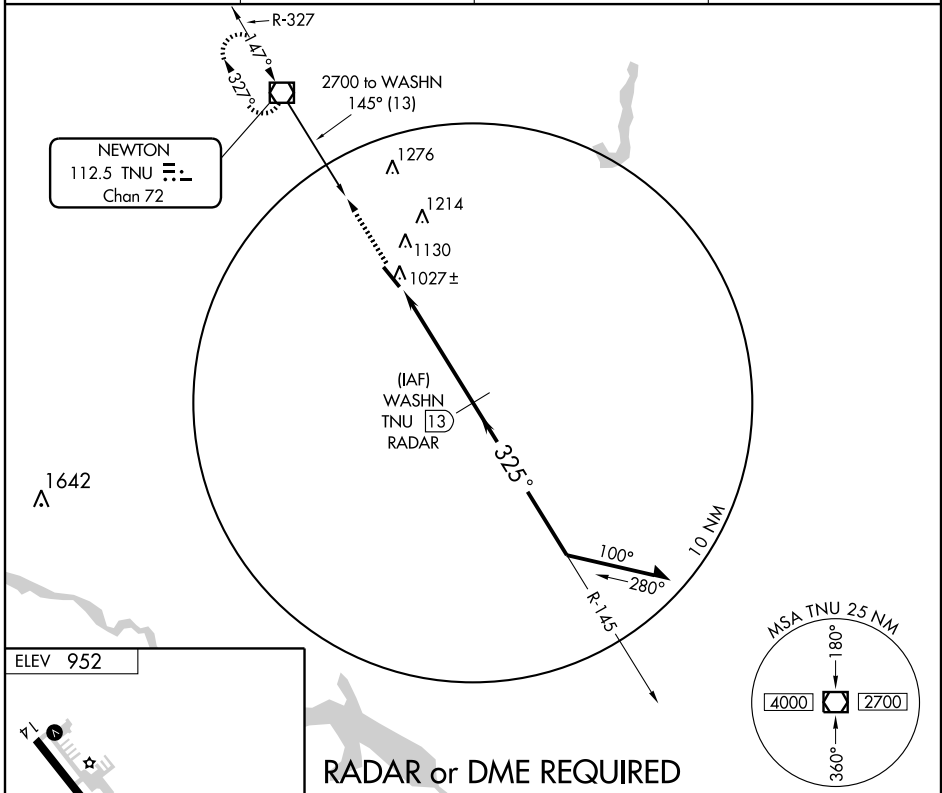
AL-5233 (FAA)

VOR/DME TNU 112.5 Chan 72	APP CRS 325°	Rwy Idg TDZE Apt Elev	5599 950 952
--	------------------------	-----------------------------	---

VOR RWY 32

NEWTON MUNI (TNU)

<p>For inoperative MALSR, increase S-32 Cat. D visibility to 1 1/4 miles.</p>	<p>MALSR</p>	<p>MISSED APPROACH: Climb to 2700 direct TNU VOR/DME and hold.</p>	
<p>AWOS-3 132.275</p>	<p>DES MOINES APP CON 123.9 307.15</p>	<p>CLNC DEL 126.3</p>	<p>UNICOM 122.8 (CTAF) 0</p>



RADAR or DME REQUIRED

2700	TNU	WASHN TNU 13/RADAR	Remain within 10 NM	
↑	☐			
	112.5			
VGSI and descent angles not coincident.				
	TNU 8.1	2700	2700	
	325°	145°	325°	
	4.9 NM	3.29° TCH 40		
CATEGORY	A	B	C	D
S-32	1300-1/2 350 (400-1/2)		1300-1 350 (400-1)	
CIRCLING	1440-1	487 (500-1)	1440-1 1/2 487 (500-1 1/2)	1520-2 567 (600-2)

NEWTON, IOWA
Amdt 9A 07074

41°40'N-93°01'W

NEWTON MUNI (TNU)
VOR RWY 32

NC-3, 22 OCT 2009 to 19 NOV 2009

NC-3, 22 OCT 2009 to 19 NOV 2009