

NEWTON, IOWA

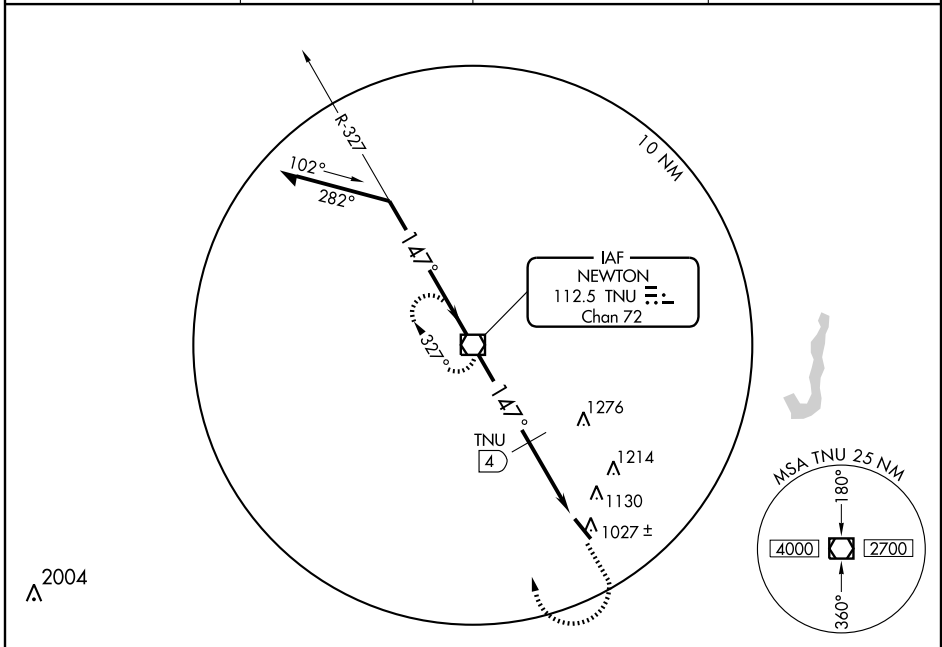
AL-5233 (FAA)

VOR/DME TNU <b>112.5</b> Chan 72	APP CRS <b>147°</b>	Rwy Idg 5599	TDZE <b>952</b>	Apt Elev <b>953</b>
--	------------------------	-----------------	--------------------	------------------------

# VOR RWY 14

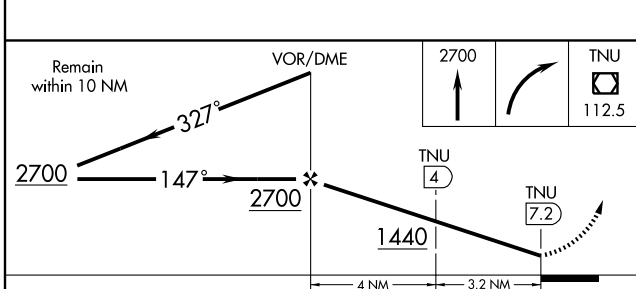
NEWTON MUNI (TNU)

<p><b>MISSED APPROACH:</b> Climb to 2700, then right turn direct TNU VOR/DME and hold.</p>			
AWOS-3 <b>132.275</b>	DES MOINES APP CON <b>123.9 307.15</b>	CLNC DEL <b>126.3</b>	UNICOM <b>122.8 (CTAF) 0</b>



NC-3, 22 OCT 2009 to 19 NOV 2009

NC-3, 22 OCT 2009 to 19 NOV 2009



ELEV 953

Knots	60	90	120	150	180
Min:Sec	7:12	4:48	3:36	2:53	2:24

CATEGORY	A	B	C	D
S-14	1440-1	488 (500-1)	1440-1¼ 488 (500-1¼)	1440-1½ 488 (500-1½)
CIRCLING	1440-1	487 (500-1)	1440-1½ 487 (500-1½)	1520-2 567 (600-2)
DME MINIMUMS				
S-14	1380-1	428 (500-1)	1380-1¼ 428 (500-1¼)	1380-1½ 428 (500-1½)
CIRCLING	1440-1	487 (500-1)	1440-1½ 487 (500-1½)	1520-2 567 (600-2)

NEWTON, IOWA  
Amdt 9 07074

41°40'N-93°01'W

NEWTON MUNI (TNU)  
**VOR RWY 14**