

NEWTON, IOWA

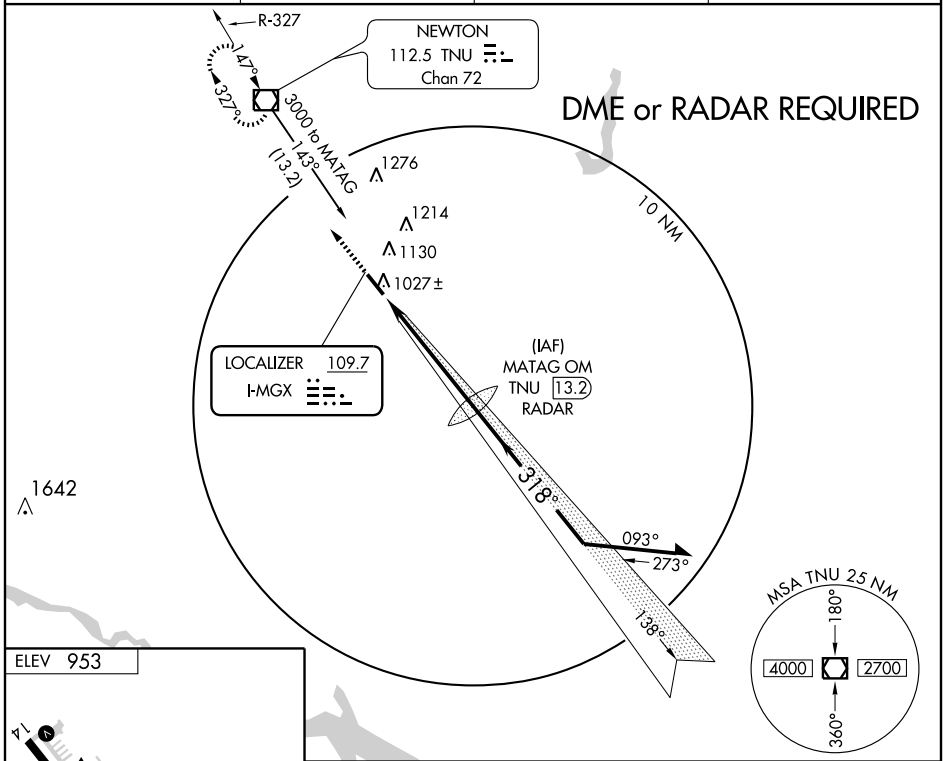
AL-5233 (FAA)

LOC I-MGX 109.7	APP CRS 318°	Rwy Idg TDZE Apt Elev	5599 950 953
---------------------------	------------------------	-----------------------------	---

ILS or LOC RWY 32

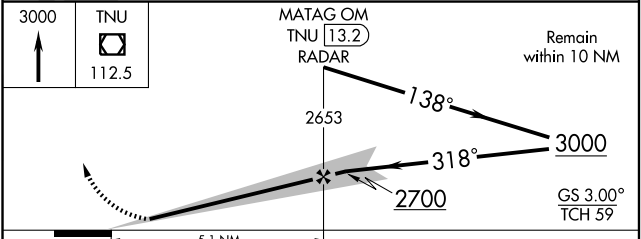
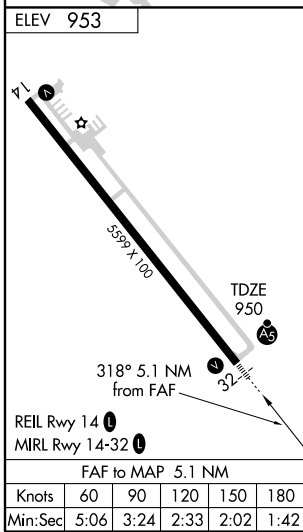
NEWTON MUNI (TNU)

			MISSED APPROACH: Climb to 3000 direct TNU VOR/DME and hold.
AWOS-3 132.275	DES MOINES APP CON 123.9 307.15	CLNC DEL 126.3	UNICOM 122.8 (CTAF)



NC-3, 22 OCT 2009 to 19 NOV 2009

NC-3, 22 OCT 2009 to 19 NOV 2009



CATEGORY	A	B	C	D
S-ILS 32	1150-½ 200 (200-½)			
S-LOC 32	1300-½ 350 (400-½)			
CIRCLING	1440-1	487 (500-1)	1440-1½ 487 (500-1½)	1520-2 567 (600-2)

NEWTON, IOWA
Amdt 1D 07130

41°40'N-93°01'W

NEWTON MUNI (TNU) ILS or LOC RWY 32