

PAHOKEE, FLORIDA

AL-5232 (FAA)

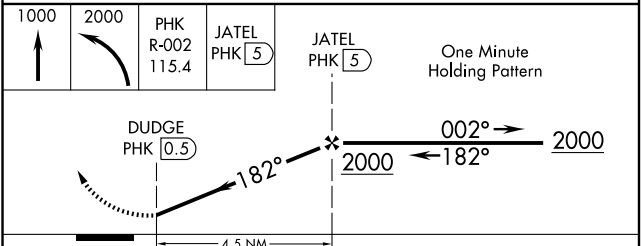
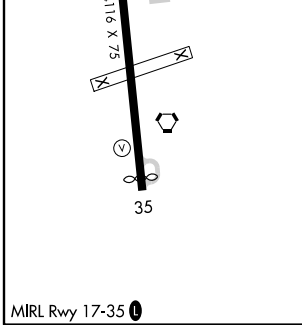
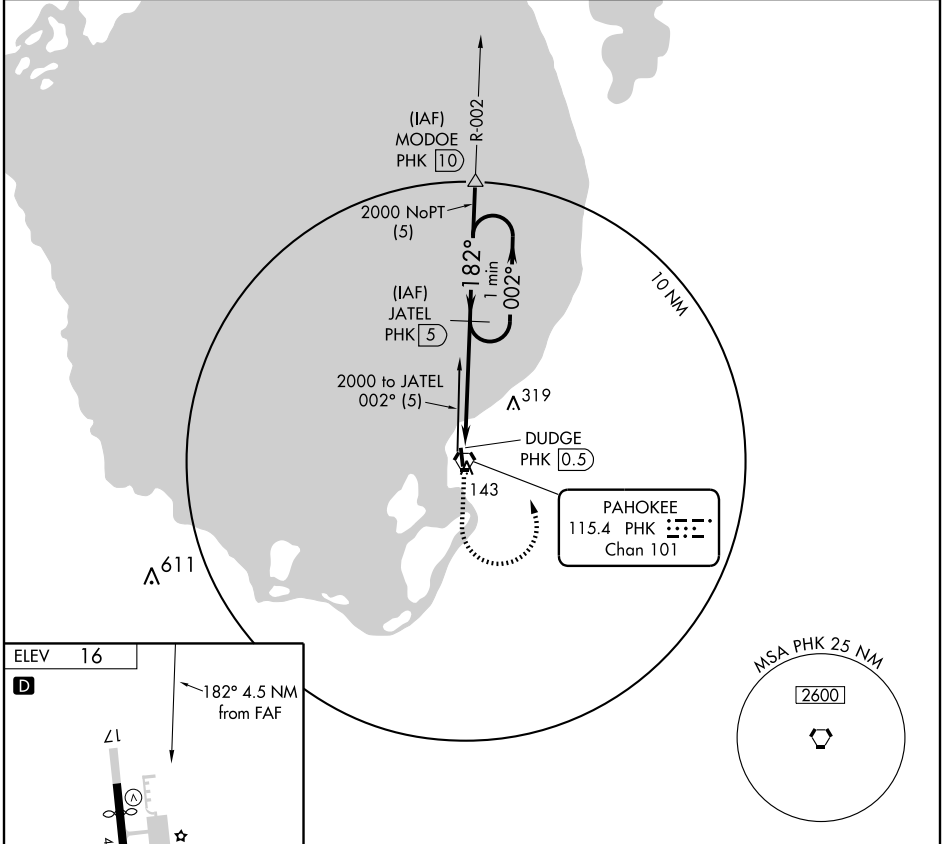
VORTAC PHK 115.4 Chan 101	APP CRS 182°	Rwy Idg TDZE Apt Elev	N/A N/A 16
---	------------------------	-----------------------------	---------------------------------------

VOR/DME-A

PAHOKEE/PALM BEACH COUNTY GLADES (PHK)

NA Use Palm Beach Intl altimeter setting.	MISSED APPROACH: Climb to 1000 then climbing left turn to 2000 via PHK R-002 to JATEL/5 DME and hold.
--	---

PALM BEACH INTL ASOS 123.75	PALM BEACH APP CON 124.6 387.1	UNICOM 122.8 (CTAF)
---------------------------------------	--	-------------------------------



CATEGORY	A	B	C	D
CIRCLING	580-1	564 (600-1)	580-1½ 564 (600-1½)	580-2 564 (600-2)

PAHOKEE, FLORIDA
Orig 09155

PAHOKEE/PALM BEACH COUNTY GLADES (PHK)
26°47'N - 80°42'W
VOR/DME-A

SE-3, 22 OCT 2009 to 19 NOV 2009

SE-3, 22 OCT 2009 to 19 NOV 2009