

PAHOKEE, FLORIDA

AL-5232 (FAA)

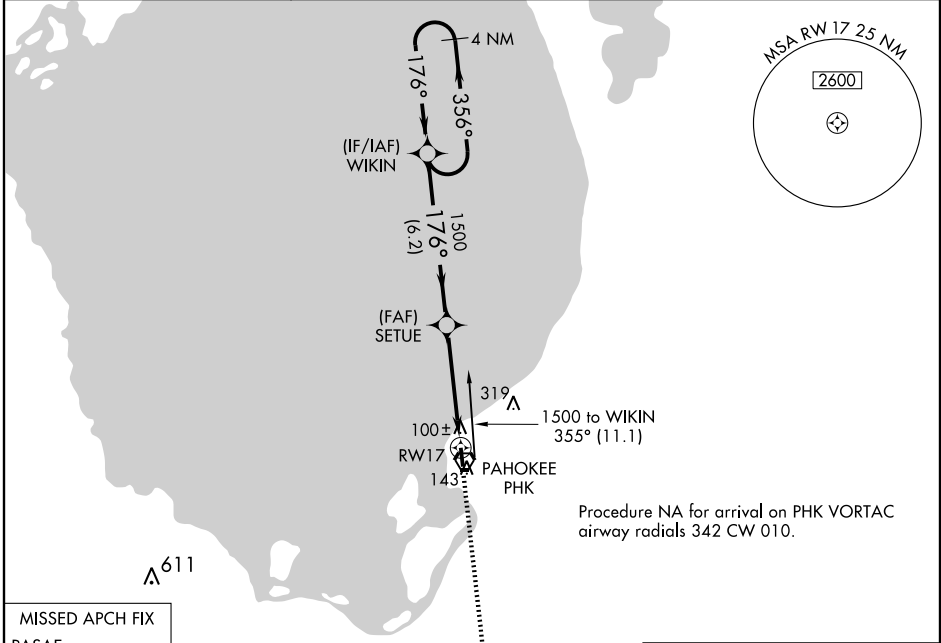
WAAS CH 53408 W17A	APP CRS 176°	Rwy Idg TDZE Apt Elev	4016 16 16
--	------------------------	-----------------------------	---------------------------------------

RNAV (GPS) RWY 17

PAHOKEE/PALM BEACH COUNTY GLADES (PHK)

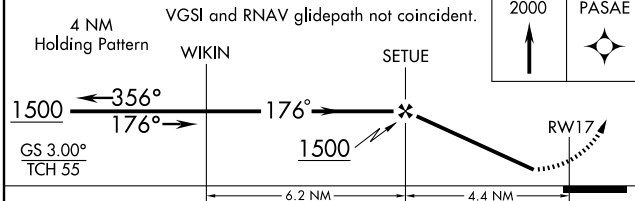
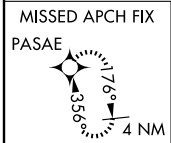
▽ △ NA	Baro-VNAV NA. DME/DME RNP-0.3 NA. Visibility reduction by helicopters NA. Use Palm Beach Intl altimeter setting.	MISSED APPROACH: Climb to 2000 direct PASAE and hold.
-------------------------	--	---

PALM BEACH INTL ASOS 123.75	PALM BEACH APP CON 124.6 387.1	UNICOM 122.8 (CTAF) 0
---------------------------------------	--	--

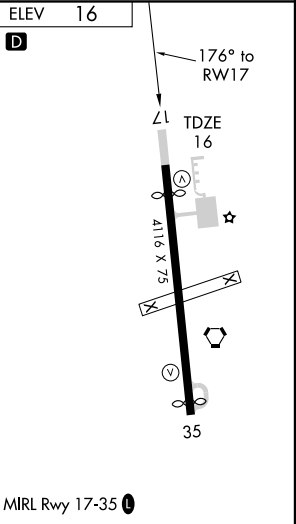


SE-3, 22 OCT 2009 to 19 NOV 2009

SE-3, 22 OCT 2009 to 19 NOV 2009



CATEGORY	A	B	C	D
LPV DA		416-1¼	400 (400-1¼)	
LNAV/VNAV DA		436-1½	420 (500-1½)	
LNAV MDA	440-1	424 (500-1)	440-1¼	424 (500-1¼)
CIRCLING	580-1	564 (600-1)	580-1½	580-2 564 (600-2)



PAHOKEE, FLORIDA
Orig 09155

PAHOKEE/PALM BEACH COUNTY GLADES (PHK)
26°47'N - 80°42'W
RNAV (GPS) RWY 17