

# RNAV (GPS) RWY 36

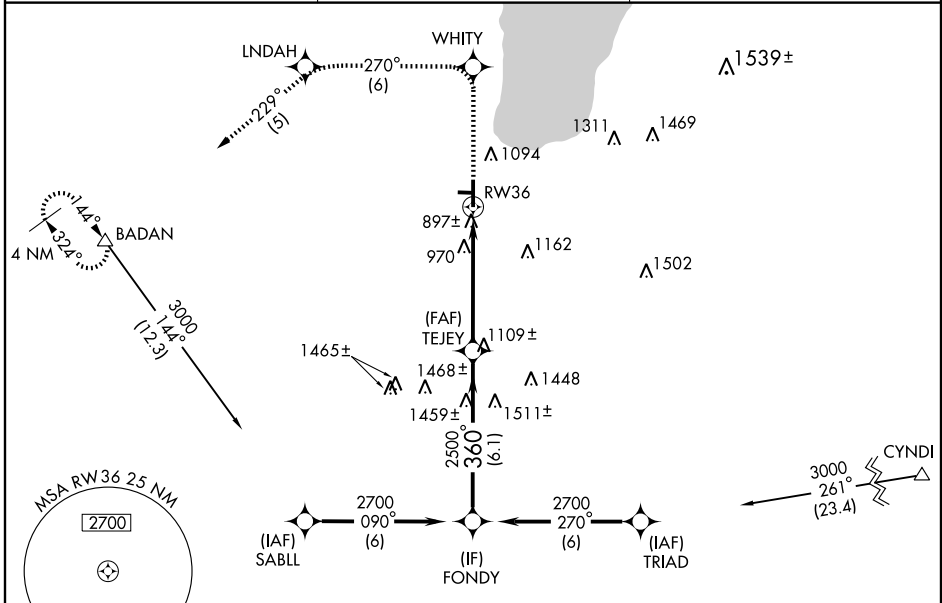
FOND DU LAC COUNTY (F.L.D)

WAAS CH <b>93800</b> <b>W36A</b>	APP CRS <b>360°</b>	Rwy Idg TDZE <b>795</b> Apt Elev <b>808</b>	<b>5940</b>
--	------------------------	---	-------------

**▼** If local altimeter setting not received, use Wittman Rgnl altimeter setting and increase all DAs/MDAs 40 feet. For uncompensated Baro-VNAV systems, LNAV/VNAV NA below -16°C (4°F) or above 47°C (117°F). VDP NA when using Wittman Rgnl altimeter setting. DME/DME RNP-0.3 NA. For inoperative MALSR, increase LPV all Cats. visibility to 1¼ mile. Baro-VNAV NA when using Wittman Rgnl altimeter setting.

**MALSR**  
 MISSED APPROACH: Climb to 3000 direct WHITY and via 270° track to LNDAH and via 229° track to BADAN and hold.

ASOS <b>134.0</b>	MILWAUKEE APP CON <b>127.0 263.075</b>	UNICOM <b>123.05 (CTAF)</b>
----------------------	---	--------------------------------

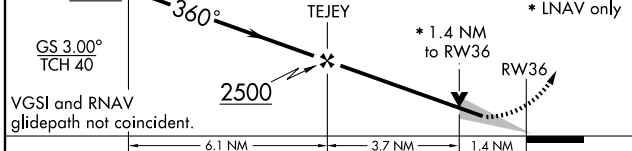


EC-3, 22 OCT 2009 to 19 NOV 2009

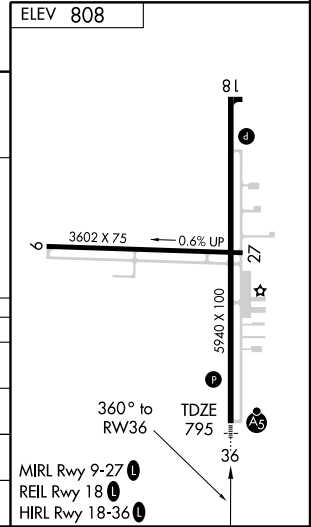
EC-3, 22 OCT 2009 to 19 NOV 2009

ELEV 808
----------

FONDY	3000	WHITY	TRK 270°	LNDAH	TRK 229°	BADAN
-------	------	-------	----------	-------	----------	-------



CATEGORY	A	B	C	D
LPV DA	1125-¾		330 (400-¾)	
LNAV/VNAV DA	1171-¾		376 (400-¾)	
LNAV MDA	1280-½	485 (500-½)	1280-¾ 485 (500-¾)	1280-1 485 (500-1)
CIRCLING	1400-1¼	592 (600-1¼)	1400-1½ 592 (600-1½)	1400-2 592 (600-2)



MIRL Rwy 9-27  
REIL Rwy 18  
HIRL Rwy 18-36