

CAMP RIPLEY, MINNESOTA

RNAV (GPS) RWY 13

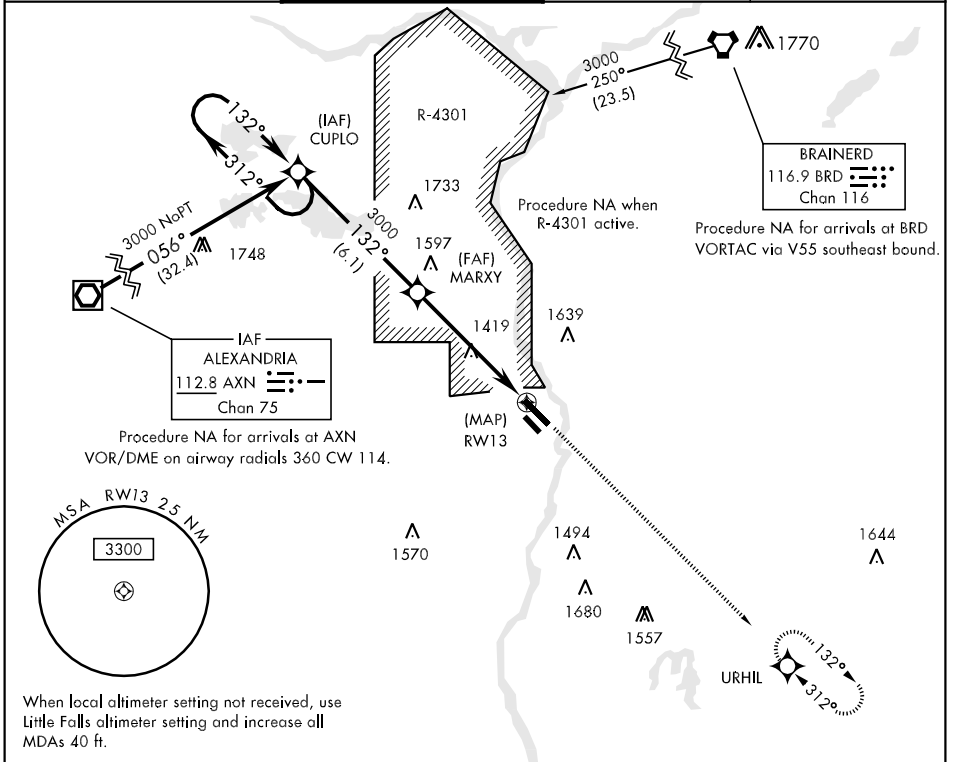
APCH CRS	Rwy Idg	6100
132°	TDZE	1152
	Arpt Elev	1152

AL-5226 [USA]

RAY S. MILLER AAF (KRYM)

▽ ▲ NA	DME/DME RNP-0.3 NA. Visibility reduction by helicopters NA.	MISSED APPROACH: Climb to 3300 direct URHIL and hold.
---------------	--	---

MINNEAPOLIS CENTER 118.05 239.0	MILLER TOWER ★ 254.4 126.20 49.2	CLNC DEL 126.2	AWOS-3 148.35
---	--	--------------------------	-------------------------



NC-1, 22 OCT 2009 to 19 NOV 2009

NC-1, 22 OCT 2009 to 19 NOV 2009

	CUPLO		MARXY	3300	URHIL	ELEV 1152
	3000 ← 312°		→ 132°	↑	◆	132° to RW13
	132° →		3000			TDZE 1152
	3.04° TCH 45					Assault Strip
	← 6.1 NM		← 5.6 NM			1299
CATEGORY	A	B	C	D		
LNAV MDA	1680-1	528 (600-1)	1680-1½ 528 (600-1½)	1680-1¾ 528 (600-1¾)		
CIRCLING	1680-1	528 (600-1)	1680-1½ 528 (600-1½)	1720-2 568 (600-2)		HIRL Rwy 13-31

CAMP RIPLEY, MINNESOTA
Orig 08157

46°05'N-94°21'W

RAY S. MILLER AAF (KRYM)

RNAV (GPS) RWY 13