

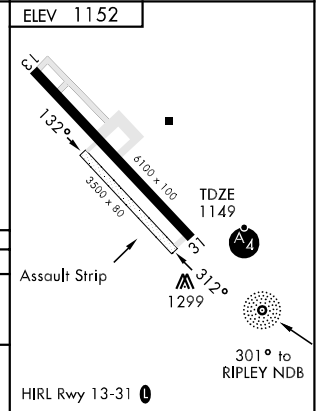
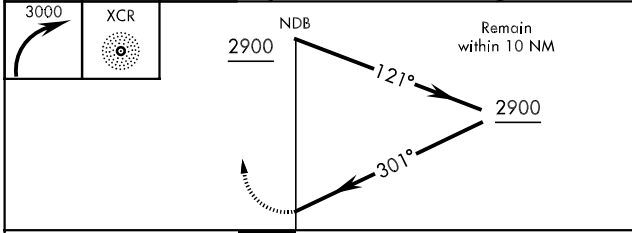
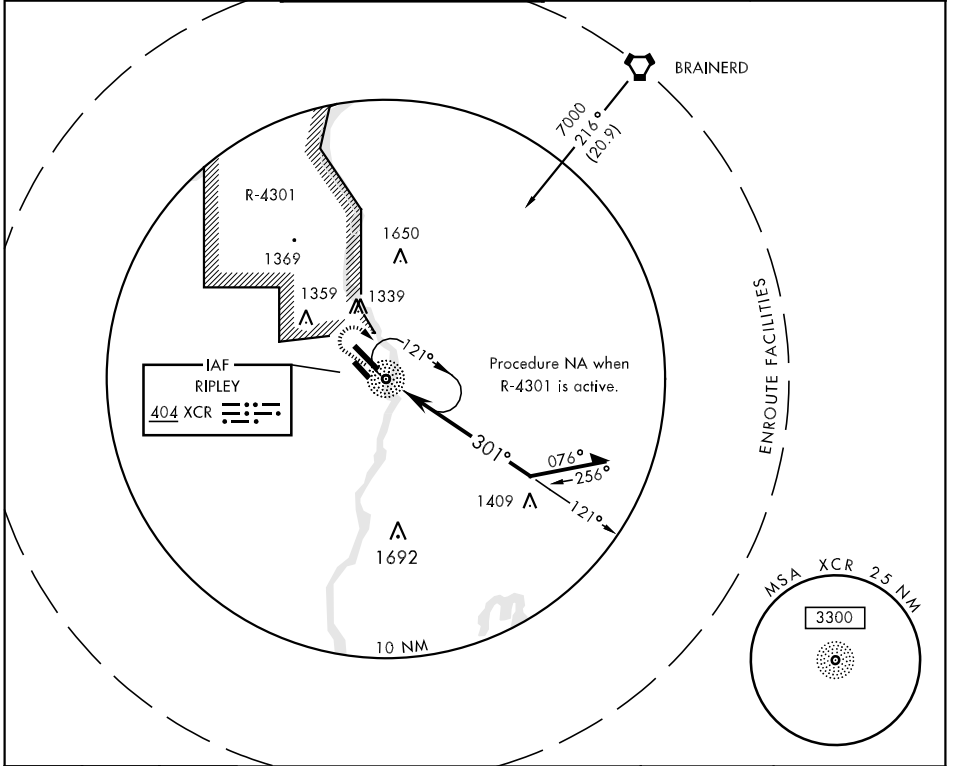
NDB XCR 404	APCH CRS 301°	Rwy Idg TDZE Arpt Elev 6100 1149 1152	AL-5226 [USA]	RAY S. MILLER AAF (KRYM)
-----------------------	-------------------------	---	---------------	--------------------------

▼ When local altimeter setting not received, use Little Falls altimeter setting and increase all MDA 40'.
▲ NA Inop table does not apply to CAT C.



MISSED APPROACH: Climbing right turn to 3000 in XCR NDB holding pattern.

MINNEAPOLIS CENTER 118.05 239.0	MILLER TOWER ★ 126.2 0 254.4 49.2	CLNC DEL 126.2	AWOS-3 148.35
---	---	--------------------------	-------------------------



CATEGORY	A	B	C	D
S-31	1760-¾ 611	(700-¾)	1760-1¾ 611 (700-1¾)	1760-2 611 (700-2)
CIRCLING	1760-1 608	(700-1)	1760-1¾ 608 (700-1¾)	1760-2 608 (700-2)

NC-1, 22 OCT 2009 to 19 NOV 2009

NC-1, 22 OCT 2009 to 19 NOV 2009