

FORT MEADE (ODENTON), MARYLAND

AL-5225 (FAA)

APP CRS <b>284°</b>	Rwy Idg TDZE Apt Elev	<b>3000</b> <b>150</b> <b>150</b>
------------------------	-----------------------------	---

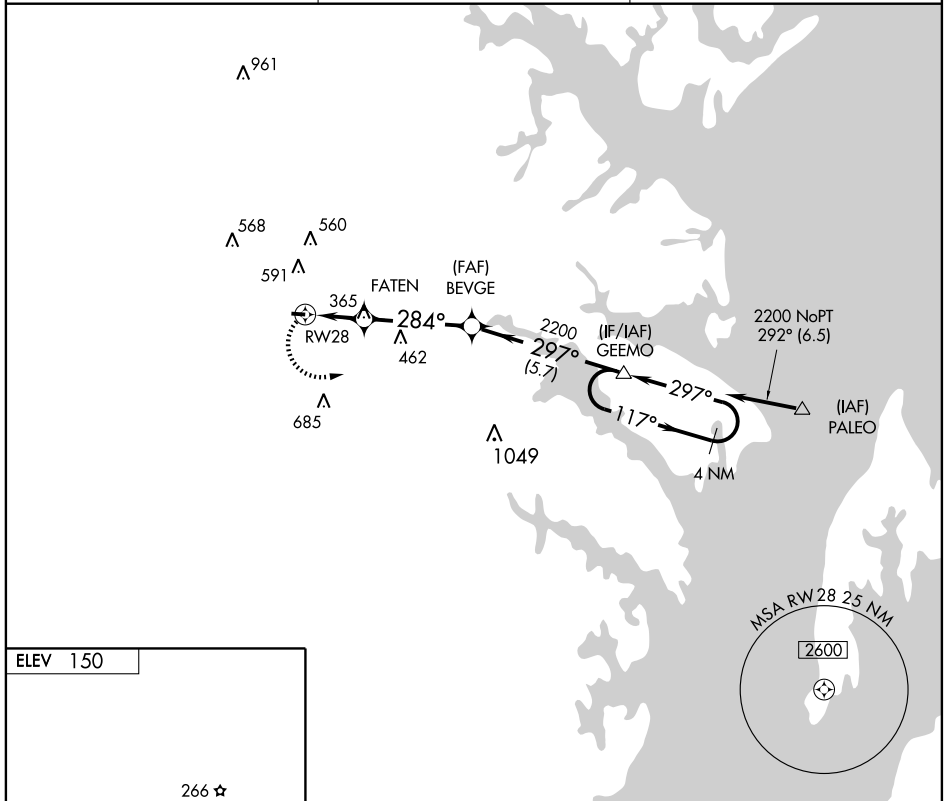
# RNAV (GPS) RWY 28

FORT MEADE (ODENTON)/ TIPTON (FME)

**▼** DME/DME RNP-0.3 NA.  
Use Baltimore/Washington Intl Thurgood Marshall  
**▲** NA altimeter setting.

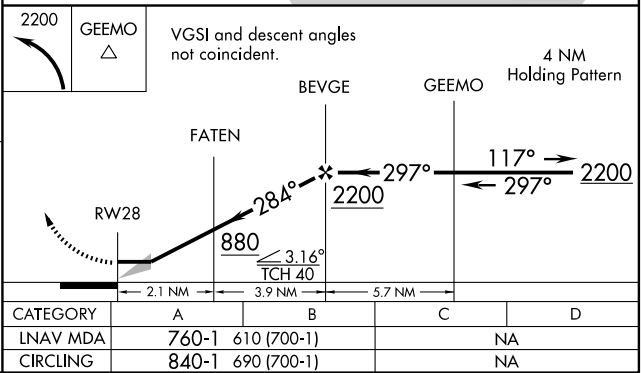
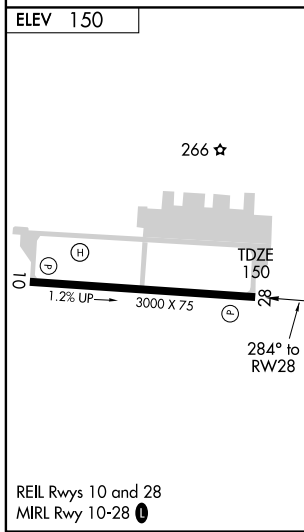
**MISSED APPROACH:** Climbing left turn to 2200 direct GEEMO WP and hold.

AWOS-3 <b>123.925</b>	POTOMAC APP CON <b>119.7 290.475</b>	UNICOM <b>123.05 (CTAF) 0</b>
--------------------------	---	----------------------------------



NE-3, 22 OCT 2009 to 19 NOV 2009

NE-3, 22 OCT 2009 to 19 NOV 2009



FORT MEADE (ODENTON), MARYLAND  
Orig-A 08157

39°05'N - 76°46'W

FORT MEADE (ODENTON)/ TIPTON (FME)  
**RNAV (GPS) RWY 28**