

# NDB RWY 10

FORT MEADE(ODENTON)/ TIPTON (FME)

NDB BUH <b>260</b>	APP CRS <b>121°</b>	Rwy Idg <b>3000</b>
		TDZE <b>150</b>
		Apt Elev <b>150</b>

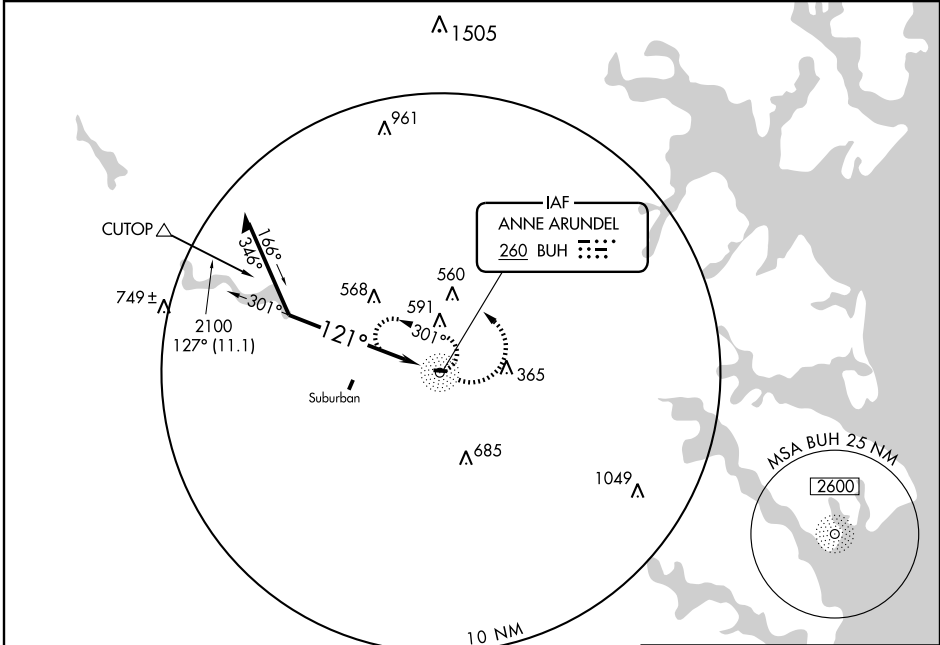
▼ Use Baltimore/Washington Intl Thurgood Marshall altimeter setting.  
 ▲ NA

MISSED APPROACH: Climbing left turn to 2100 in BUH NDB holding pattern.

AWOS-3  
**123.925**

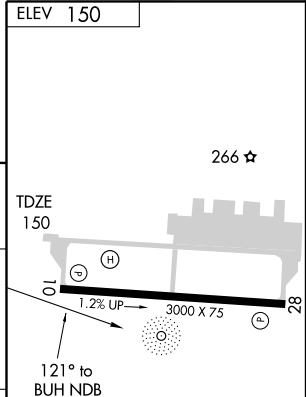
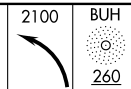
POTOMAC APP CON  
**119.7 290.475**

UNICOM  
**123.05 (CTAF) 0**



NE-3, 22 OCT 2009 to 19 NOV 2009

NE-3, 22 OCT 2009 to 19 NOV 2009



CATEGORY	A	B	C	D
S-10	1120-1¼ 970 (1000-1¼)	1120-1½ 970 (1000-1½)		NA
CIRCLING	1120-1¼ 970 (1000-1¼)	1120-1½ 970 (1000-1½)		NA

REIL Rwy 10 and 28  
MRL Rwy 10-28 0