

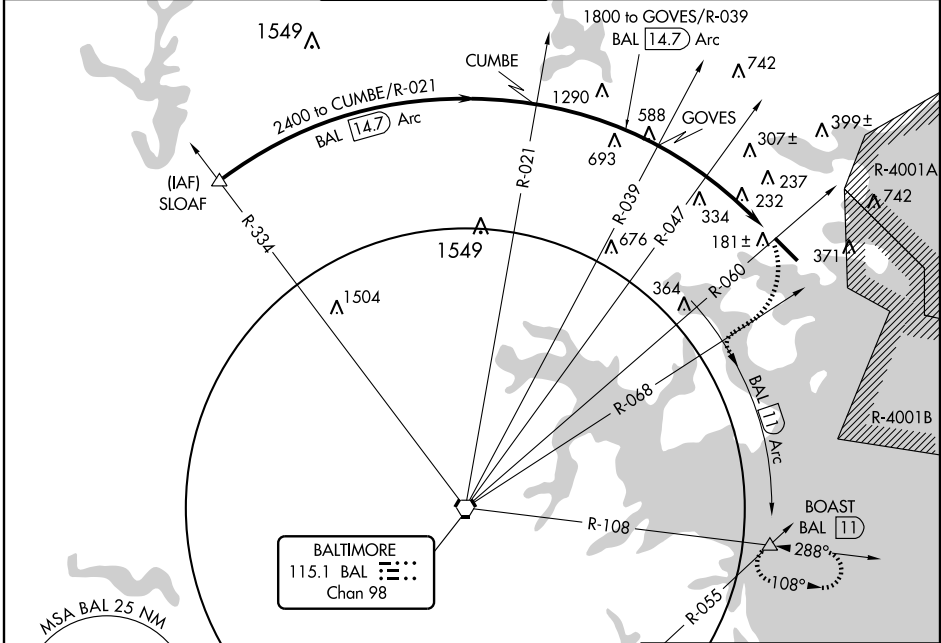
VOR/DME or TACAN Z RWY 15

BALTIMORE / MARTIN STATE (MTN)

VORTAC BAL 115.1 Chan 98	BAL 14.7 Arc	Rwy Idg 6996 TDZE 22 Apt Elev 22
---------------------------------------	--------------------	---

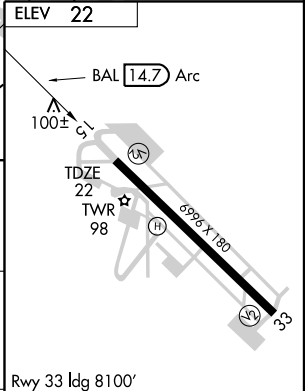
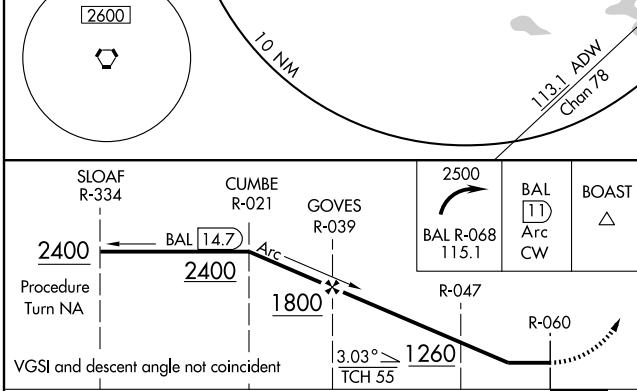
⚠ MISSED APPROACH: Climbing right turn to 2500 via BAL R-068 and BAL 11 DME Arc clockwise to BOAST Int/BAL 11 DME and hold.

ATIS 124.925	POTOMAC APP CON 119.0 282.275	MARTIN TOWER ★ 121.3 (CTAF) 0 297.2	GND CON 121.8 253.4	CLNC DEL 121.8	UNICOM 122.95
------------------------	---	--	-------------------------------	--------------------------	-------------------------



NE-3, 22 OCT 2009 to 19 NOV 2009

NE-3, 22 OCT 2009 to 19 NOV 2009



CATEGORY	A	B	C	D
S-15	900-1 878 (900-1)	900-1½ 878 (900-1½)	900-2½ 878 (900-2½)	900-2¾ 878 (900-2¾)
CIRCLING	900-1 878 (900-1)	900-1½ 878 (900-1½)	900-2½ 878 (900-2½)	900-2¾ 878 (900-2¾)

Rwy 33 ldg 8100'
(Military Operations Only)
Rwy 15 take-off 8100'
(Military Operations Only)
HIRL Rwy 15-33
REIL Rws 15 and 33

VOR/DME or TACAN Z RWY 15