

# LOC RWY 15

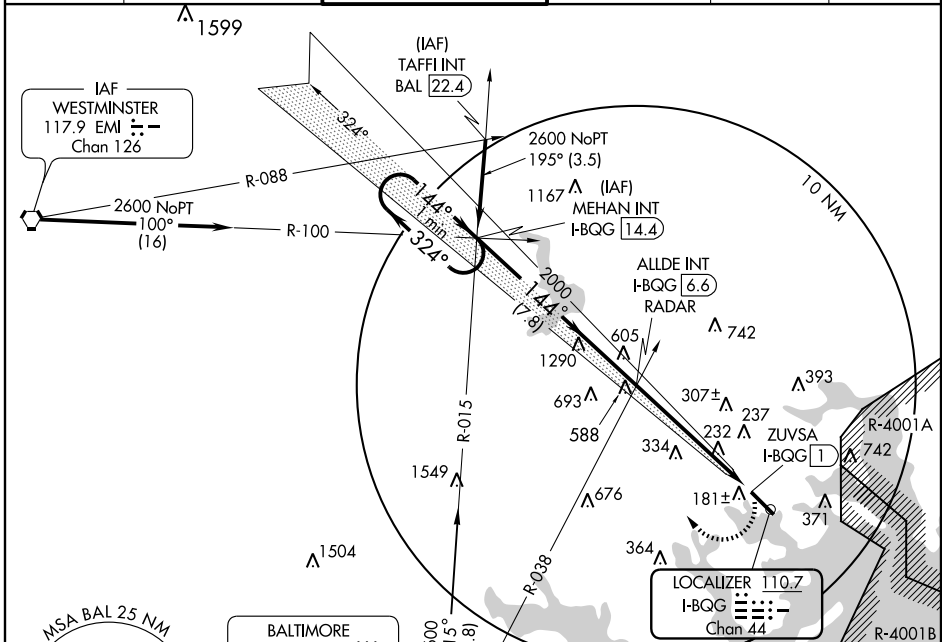
BALTIMORE / MARTIN STATE (MTN)

LOC I-BQG <b>110.7</b> Chan 44	APP CRS <b>144°</b>	Rwy Idg TDZE <b>22</b> Apt Elev <b>22</b>	<b>6996</b>
--------------------------------------	------------------------	---	-------------

**⚠** If local altimeter setting not received, use Baltimore/Washington Intl Thurgood Marshall altimeter setting and increase all MDAs 60 feet.

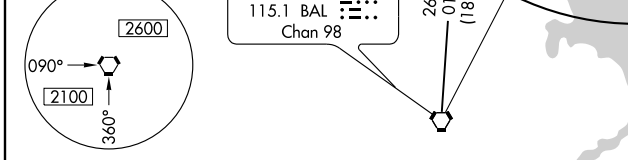
**MISSED APPROACH:** Climbing right turn to 2600 via heading 312° and BAL R-015 to MEHAN Int/I-BQG 14.4 DME and hold.

ATIS <b>124.925</b>	POTOMAC APP CON <b>119.0 282.275</b>	MARTIN TOWER ★ <b>121.3 (CTAF) 0 297.2</b>	GND CON <b>121.8 253.4</b>	CLNC DEL <b>121.8</b>	UNICOM <b>122.95</b>
------------------------	---	---	-------------------------------	--------------------------	-------------------------

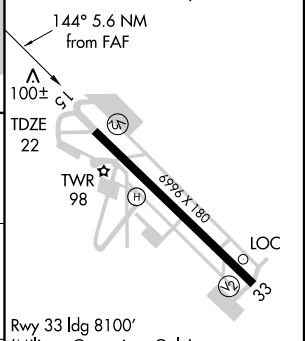
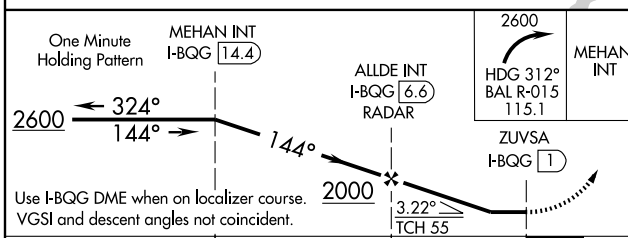


NE-3, 22 OCT 2009 to 19 NOV 2009

NE-3, 22 OCT 2009 to 19 NOV 2009



ELEV 22	HIRL Rwy 15-33
	REIL Rwys 15 and 33



CATEGORY	A	B	C	D
S-15	480-1 458 (500-1)		480-1½ 458 (500-1½)	480-1½ 458 (500-1½)
CIRCLING	520-1 498 (500-1)		520-1½ 498 (500-1½)	680-2 658 (700-2)

	FAF to MAP 5.6 NM				
Knots	60	90	120	150	180
Min:Sec	5:36	3:44	2:48	2:14	1:52