

LOC/DME I-MTN 110.7 Chan 44	APP CRS 326°	Rwy ldg TDZE Apt Elev	6996 15 22
---	------------------------	-----------------------------	---------------------------------------

ILS or LOC RWY 33

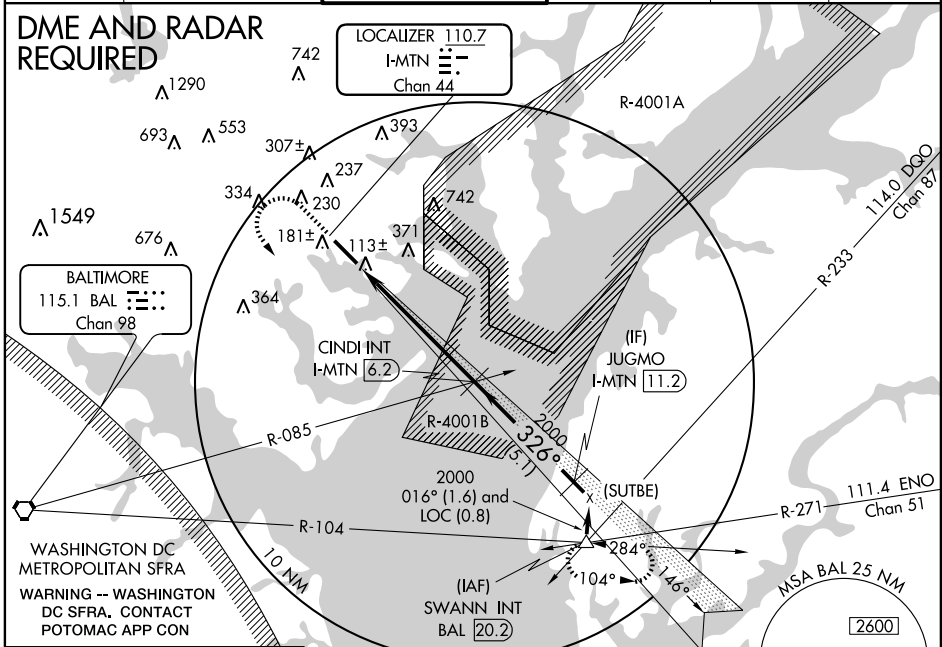
BALTIMORE / MARTIN STATE (MTN)

▼ If local altimeter setting not received, use Baltimore-Washington Intl Thurgood Marshall altimeter setting and increase all DAs/MDAs 60 feet. Visibility reduction by helicopters NA.

MISSED APPROACH: Climb to 600 then climbing left turn 2000 via heading 146° and BAL VORTAC R-104 to SWANN INT/BAL 20.2 DME and hold.

ATIS 124.925	POTOMAC APP CON 119.0 282.275	MARTIN TOWER ★ 121.3 (CTAF) 0 297.2	GND CON 121.8 253.4	CLNC DEL 121.8	UNICOM 122.95
------------------------	---	---	-------------------------------	--------------------------	-------------------------

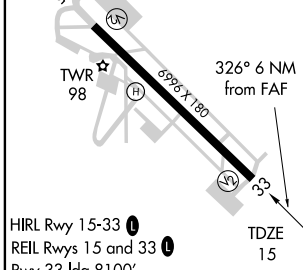
DME AND RADAR REQUIRED



NE-3, 22 OCT 2009 to 19 NOV 2009

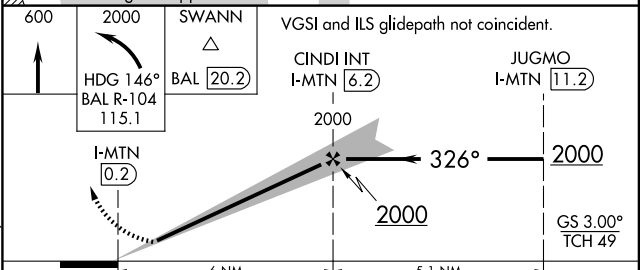
NE-3, 22 OCT 2009 to 19 NOV 2009

ELEV 22



FAF to MAP 6 NM					
Knots	60	90	120	150	180
Min:Sec	6:00	4:00	3:00	2:24	2:00

Procedure NA for arrivals at SWANN via V170-V214-V433 SW Bnd.
Note: Clearance through R-4001 A/B must be obtained before using this approach.



CATEGORY	A	B	C	D
S-ILS 33	290-1 275 (300-1)			
S-LOC 33	380-1 365 (400-1)			380-1¼ 365 (400-1¼)
CIRCLING	520-1 498 (500-1)		520-1½ 498 (500-1½)	