

VOR or GPS-A

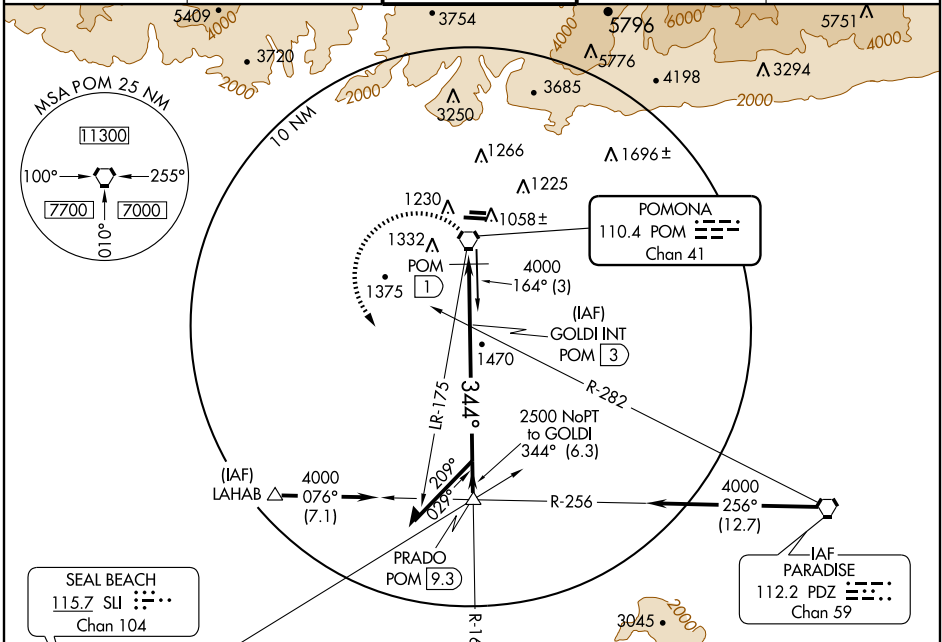
LA VERNE/ BRACKETT FIELD (POC)

VORTAC POM 110.4 Chan 41	APP CRS 344°	Rwy ldg TDZE Apt Elev N/A N/A 1011
---------------------------------------	------------------------	--

⚠ When local altimeter setting not received, use Ontario Intl altimeter setting and increase all MDA 40 feet and visibility Cat. C ¼ mile.

⚠ MISSED APPROACH: Climbing left turn to 4000 via POM R-164 to PRADO Int.

ATIS 124.4	SOCAL APP CON 125.5 349.0	BRACKETT TOWER ★ 118.2 (CTAF)	GND CON 125.0	UNICOM 122.95
----------------------	-------------------------------------	---	-------------------------	-------------------------

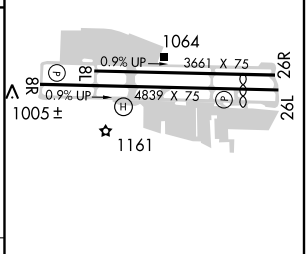
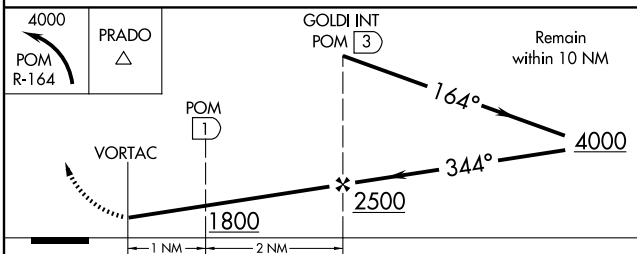


SW-3, 22 OCT 2009 to 19 NOV 2009

SW-3, 22 OCT 2009 to 19 NOV 2009



ELEV 1011	Rwy 26L ldg 4151'
-----------	-------------------



CATEGORY	A	B	C	D
CIRCLING	1800-1 789 (800-1)	1800-1¼ 789 (800-1¼)	1800-2¼ 789 (800-2¼)	NA
DME MINIMUMS				
CIRCLING	1640-1 629 (700-1)		1680-1¾ 669 (700-1¾)	NA

REIL Rwys 8R and 26L	MIRL Rwy 8R-26L				
Knots	60	90	120	150	180
Min:Sec					