

# LOC RWY 26L

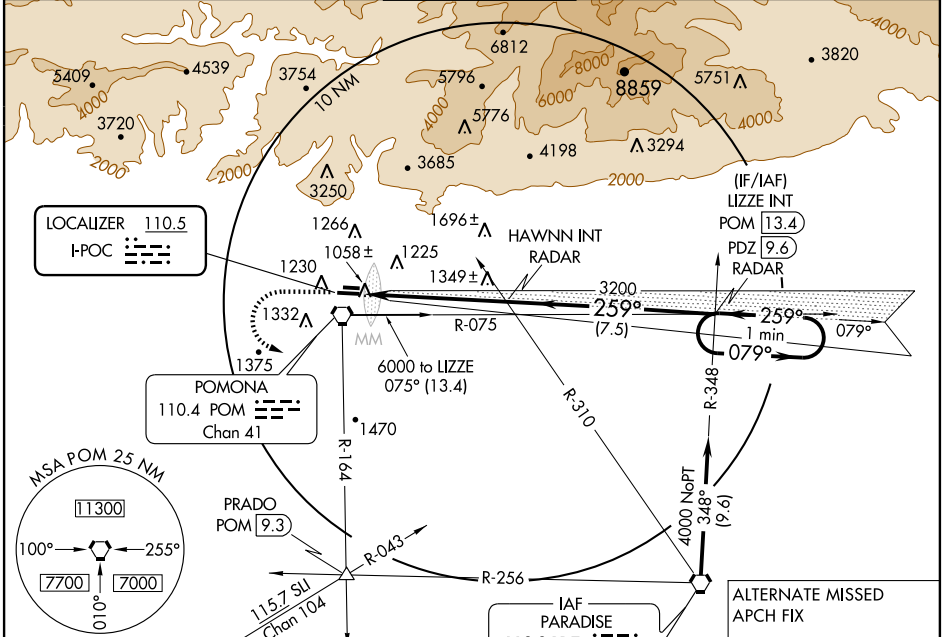
LA VERNE/BRACKETT FIELD (POC)

LOC	I-POC	APP CRS	Rwy ldg	4151
<b>110.5</b>		<b>259°</b>	TDZE	1002
			Apt Elev	1011

**⚠** Visibility reduction by helicopters NA.  
**⚠** When local altimeter setting not received, use Ontario Intl altimeter setting and increase all MDAs 40 feet.

MISSED APPROACH: Climb to 2100 then dimbing left turn to 4000 via POM VORTAC R-164 to PRADO INT/POM 9.3 DME.

ATIS <b>124.4</b>	SOCAL APP CON <b>125.5 349.0</b>	BRACKETT TOWER ★ <b>118.2 (CTAF)</b>	GND CON <b>125.0</b>	UNICOM <b>122.95</b>
----------------------	-------------------------------------	---	-------------------------	-------------------------



SW-3, 22 OCT 2009 to 19 NOV 2009

ELEV 1011	Rwy 26L ldg 4151'
-----------	-------------------

