

HASTINGS, NEBRASKA

AL-5217 (FAA)

# VOR or GPS RWY 32

HASTINGS MUNI (HSI)

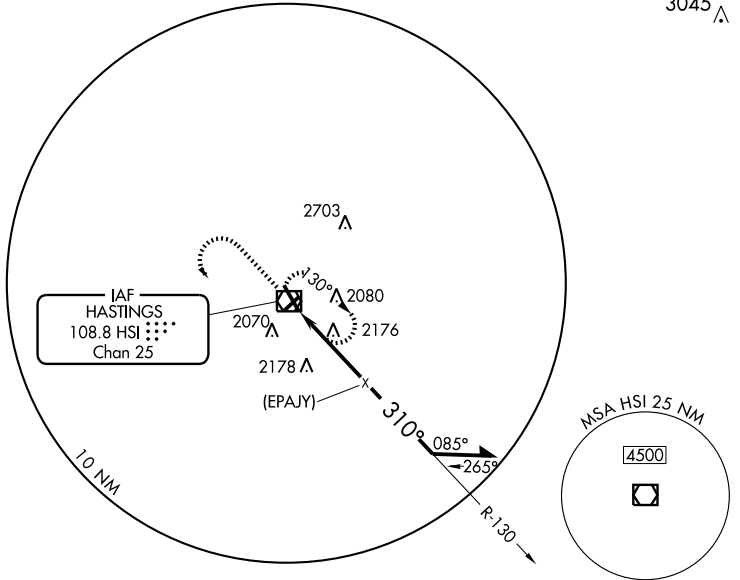
VOR/DME HSI <b>108.8</b> Chan <b>25</b>	APP CRS <b>310°</b>	Rwy Idg TDZE Apt Elev	<b>5501</b> <b>1945</b> <b>1961</b>
---	------------------------	-----------------------------	---

MISSED APPROACH: Climb to 3700 then left turn direct HSI VOR/DME and hold.

ASOS  
**120.525**

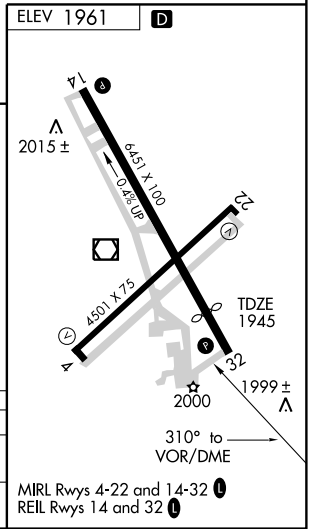
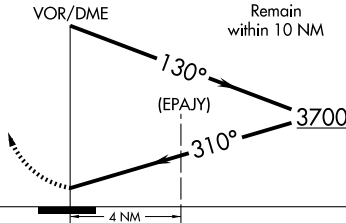
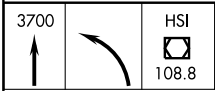
MINNEAPOLIS CENTER  
**119.4 278.8**

UNICOM  
**122.8 (CTAF) 0**



NC-2, 22 OCT 2009 to 19 NOV 2009

NC-2, 22 OCT 2009 to 19 NOV 2009



CATEGORY	A	B	C	D
S-32	2540-1	595 (600-1)	2540-1 1/2 595 (600-1 1/2)	2540-1 3/4 595 (600-1 3/4)
CIRCLING	2540-1	579 (600-1)	2540-1 1/2 579 (600-1 1/2)	2540-2 579 (600-2)

HASTINGS, NEBRASKA  
Amdt 13C 08325

40°36'N-98°26'W

# HASTINGS MUNI (HSI) VOR or GPS RWY 32