

HASTINGS, NEBRASKA

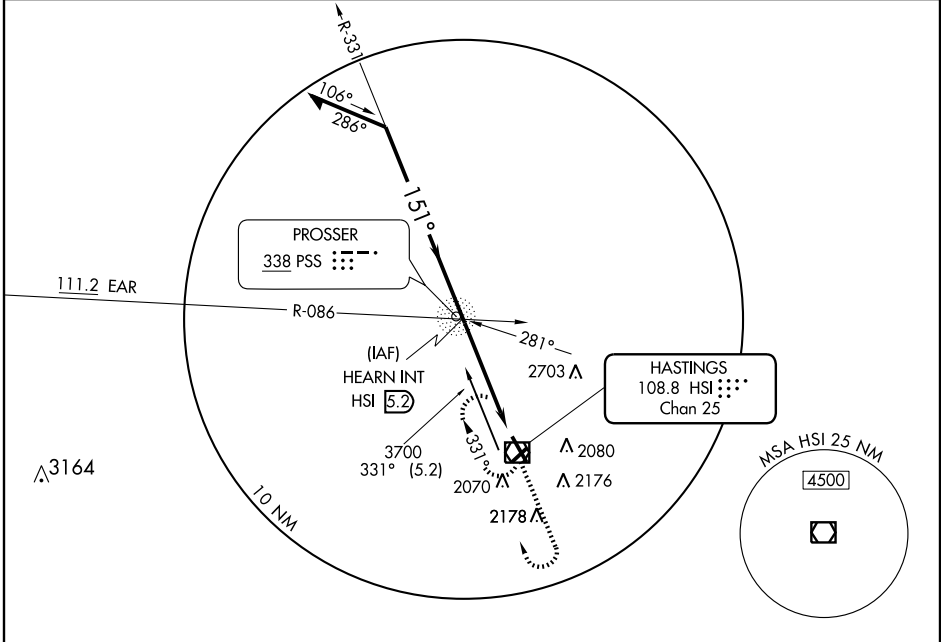
AL-5217 (FAA)

VOR RWY 14
HASTINGS MUNI (HSI)

VOR/DME HSI 108.8 Chan 25	APP CRS 151°	Rwy Idg TDZE Apt Elev	6451 1961 1961
-----------------------------------------------	------------------------	-----------------------------	-------------------------------------------

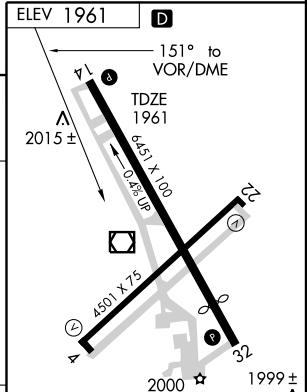
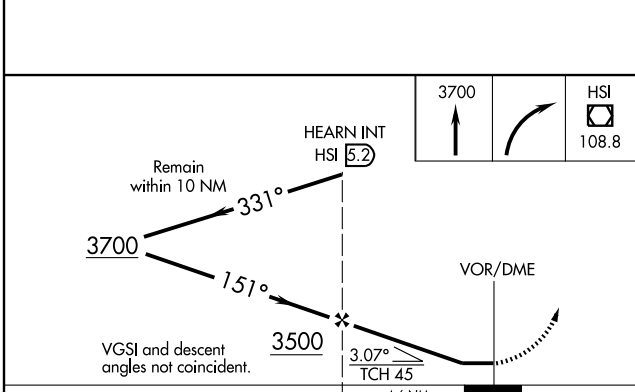
MISSED APPROACH: Climb to 3700 then right turn direct HSI VOR/DME and hold.

ASOS 120.525	MINNEAPOLIS CENTER 119.4 278.8	UNICOM 122.8 (CTAF)
------------------------	------------------------------------------	-------------------------------



NC-2, 22 OCT 2009 to 19 NOV 2009

NC-2, 22 OCT 2009 to 19 NOV 2009



CATEGORY	A	B	C	D
S-14		2360-1 399 (400-1)		2360-1¼ 399 (400-1¼)
CIRCLING	2380-1 419 (500-1)	2420-1 459 (500-1)	2540-1½ 579 (600-1½)	2540-2 579 (600-2)

MIRL Rwy 4-22 and 14-32
REIL Rwy 14 and 32

HASTINGS, NEBRASKA
Amdt 16D 08325

40°36'N-98°26'W

HASTINGS MUNI (HSI)
VOR RWY 14