

HASTINGS, NEBRASKA

AL-5217 (FAA)

RNAV (GPS) RWY 14

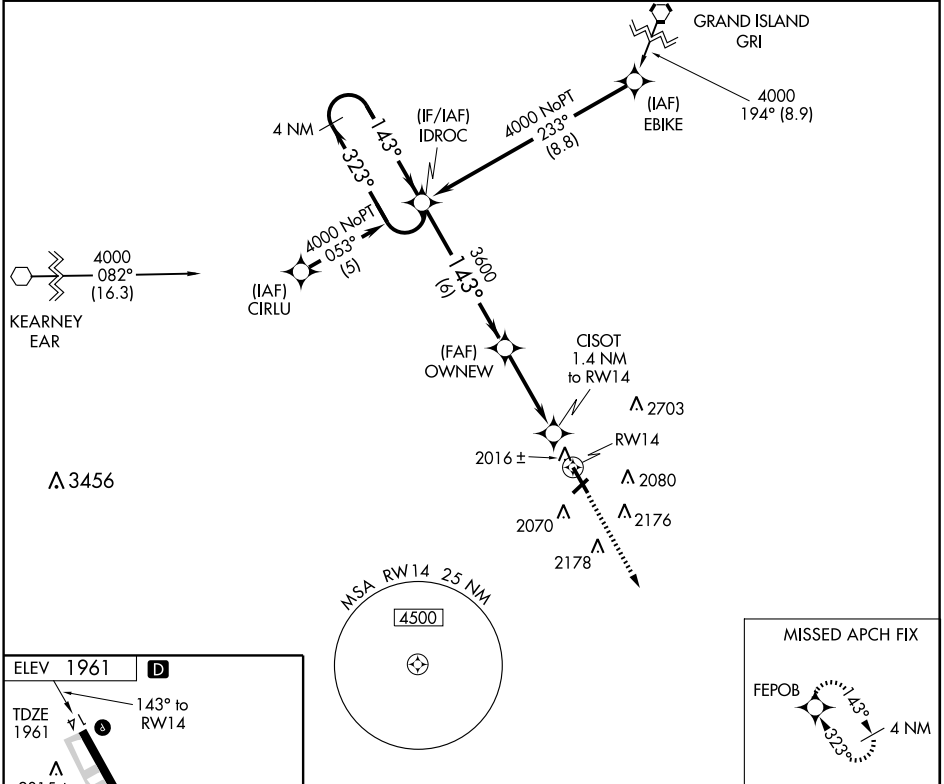
HASTINGS MUNI (HSI)

WAAS CH 65612 W14A	APP CRS 143°	Rwy Idg 6451 TDZE 1961 Apt Elev 1961
--	------------------------	---

⚠ If local altimeter setting not received use Grand Island altimeter setting and increase all DA/MDA's 80 feet. Baro-VNAV NA when using Grand Island altimeter setting. Circling Rwy 22 NA at night. Baro-VNAV NA below -18°C (0°F). DME/DME RNP -0.3 NA.

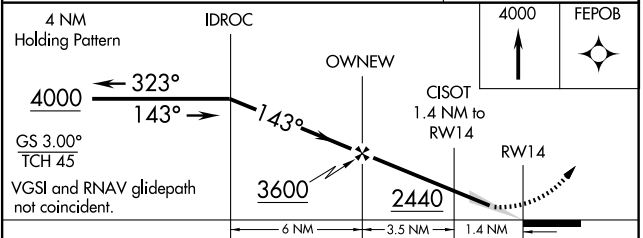
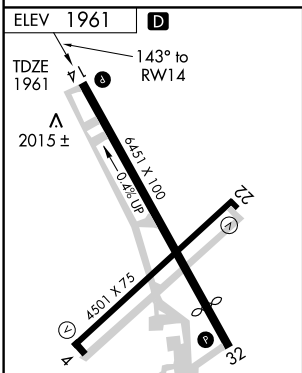
MISSED APPROACH: Climb to 4000 direct FEPOB and hold.

ASOS 120.525	MINNEAPOLIS CENTER 119.4 278.8	UNICOM 122.8 (CTAF) 0
------------------------	--	---------------------------------



NC-2, 22 OCT 2009 to 19 NOV 2009

NC-2, 22 OCT 2009 to 19 NOV 2009



CATEGORY	A	B	C	D
LPV DA		2220-1	259 (300-1)	
LNAV/VNAV DA		2280-1	319 (400-1)	
LNAV MDA		2280-1	319 (400-1)	
CIRCLING	2380-1 419 (500-1)	2420-1 459 (500-1)	2540-1½ 579 (600-1½)	2540-2 579 (600-2)

HASTINGS, NEBRASKA
Orig 08325

40°36'N-98°26'W

RNAV (GPS) RWY 14

HASTINGS MUNI (HSI)